



Drosophila melanogaster as a model host for the Burkholderia cepacia complex.

Josée Castonguay-Vanier, Ludovic Vial, Julien Tremblay, Eric Déziel

► **To cite this version:**

Josée Castonguay-Vanier, Ludovic Vial, Julien Tremblay, Eric Déziel. Drosophila melanogaster as a model host for the Burkholderia cepacia complex.. PLoS ONE, Public Library of Science, 2010, 5 (7), pp.e11467. 10.1371/journal.pone.0011467 . pasteur-00547901

HAL Id: pasteur-00547901

<https://hal-riip.archives-ouvertes.fr/pasteur-00547901>

Submitted on 4 Feb 2011

HAL is a multi-disciplinary open access archive for the deposit and dissemination of scientific research documents, whether they are published or not. The documents may come from teaching and research institutions in France or abroad, or from public or private research centers.

L'archive ouverte pluridisciplinaire **HAL**, est destinée au dépôt et à la diffusion de documents scientifiques de niveau recherche, publiés ou non, émanant des établissements d'enseignement et de recherche français ou étrangers, des laboratoires publics ou privés.

Drosophila melanogaster as a Model Host for the *Burkholderia cepacia* Complex

Josée Castonguay-Vanier¹, Ludovic Vial¹, Julien Tremblay, Eric Déziel*

Institut National de la Recherche Scientifique (INRS)-Institut Armand Frappier, Laval, Canada

Abstract

Background: Colonization with bacterial species from the *Burkholderia cepacia* complex (Bcc) is associated with fast health decline among individuals with cystic fibrosis. In order to investigate the virulence of the Bcc, several alternative infection models have been developed. To this end, the fruit fly is increasingly used as surrogate host, and its validity to enhance our understanding of host-pathogen relationships has been demonstrated with a variety of microorganisms. Moreover, its relevance as a suitable alternative to mammalian hosts has been confirmed with vertebrate organisms.

Methodology/Principal Findings: The aim of this study was to establish *Drosophila melanogaster* as a surrogate host for species from the Bcc. While the feeding method proved unsuccessful at killing the flies, the pricking technique did generate mortality within the populations. Results obtained with the fruit fly model are comparable with results obtained using mammalian infection models. Furthermore, validity of the *Drosophila* infection model was confirmed with *B. cenocepacia* K56-2 mutants known to be less virulent in murine hosts or in other alternative models. Competitive index (CI) analyses were also performed using the fruit fly as host. Results of CI experiments agree with those obtained with mammalian models.

Conclusions/Significance: We conclude that *Drosophila* is a useful alternative infection model for Bcc and that fly pricking assays and competition indices are two complementary methods for virulence testing. Moreover, CI results indicate that this method is more sensitive than mortality tests.

Citation: Castonguay-Vanier J, Vial L, Tremblay J, Déziel E (2010) *Drosophila melanogaster* as a Model Host for the *Burkholderia cepacia* Complex. PLoS ONE 5(7): e11467. doi:10.1371/journal.pone.0011467

Editor: François Leulier, CNRS - Université Aix-Marseille, France

Received: March 9, 2010; **Accepted:** May 19, 2010; **Published:** July 12, 2010

Copyright: © 2010 Castonguay-Vanier et al. This is an open-access article distributed under the terms of the Creative Commons Attribution License, which permits unrestricted use, distribution, and reproduction in any medium, provided the original author and source are credited.

Funding: This study was supported by the Canadian Institutes of Health Research (CIHR) Operating grant MOP-77642 to ED. JCV received a master of science (M.Sc.) scholarship and LV a postdoctoral fellowship, both from the Fondation Armand-Frappier. JT was recipient of a doctor of philosophy (Ph.D.) scholarship from the Fonds québécois de la recherche sur la nature et les technologies (FQRNT). The funders had no role in study design, data collection and analysis, decision to publish, or preparation of the manuscript.

Competing Interests: The authors have declared that no competing interests exist.

* E-mail: eric.deziel@iaf.inrs.ca

These authors contributed equally to this work.

Introduction

Members of the *Burkholderia* bacterial genus are well known for the versatility of their ecological niches. They were first isolated from the phytosphere where they were found to be pathogenic to plants [1]. However, it is now known that many *Burkholderia* also have developed beneficial interactions with their plant hosts and have considerable ecological importance: several species of *Burkholderia* have proven to be very efficient biocontrol and bioremediation agents [2,3]. *Burkholderia* species are among the most antibiotic-resistant bacteria associated with human infections [4]. Some species can in fact survive in antimicrobial agent solutions [5], and inside macrophages [6,7] and free-living amoebae [8]. Within the genus, the *Burkholderia cepacia* complex (Bcc) has channelled a great part of the interest for all these reasons. Furthermore, species from the Bcc are responsible for chronic granulomatous disease [9] and are posing a considerable threat to immunocompromised individuals such as cystic fibrosis (CF) patients. The seriousness of a Bcc infection is highlighted by the fact that CF patients infected with Bcc strains suffer a faster health decline than when infected with *Pseudomonas aeruginosa* [10].

The Bcc is composed of at least seventeen closely related genomic species or genomovars, all of which having been recovered from CF individuals [11,12]. Their prevalence is however not equal: *B. multivorans* and *B. cenocepacia* are the most encountered, with the latter also associated with the highest mortality rate within the CF community [11].

Much remains to be done to better understand the mechanisms behind the broad virulence of the Bcc, and development of animal models seems therefore inevitable. The traditional murine model has proven useful in the quest for understanding the virulence mechanisms of the Bcc [13,14,15,16], but the search is on for more cost-effective alternatives and for somewhat less controversial widescreen models with faster generation time.

Over recent years, several alternative infection models have been developed for the Bcc, notably *Galleria mellonella*, *Caenorhabditis elegans* and alfalfa (*Medicago sativa*) [17][18][19]. The alfalfa seedlings model was the first proposed alternative to mice. This simple model to assess virulence revealed various patterns of infection between Bcc strains [18]. The larvae of the greater wax moth *G. mellonella* has recently been proposed as a useful model for the testing of different strains of the Bcc [17], partly because it

had previously shown good correlation between *P. aeruginosa* infection outcomes in mammals and in lower organisms [20]. However, *M. sativa* and *G. mellonella* are not easily manipulated genetically. Hosts with which both reverse and forward genetics are readily possible represent additional advantages. Thus, the nematode *C. elegans*, easily genetically manipulated, has also been suggested [19], but produced mixed results regarding infection outcomes [17,19,21].

The genome sequence of the fruit fly has been unravelled several years ago [22] and mutants are readily available. Although *Drosophila* does not possess an acquired immune system, its innate counterpart is very similar to the mammalian one [23,24]. The fruit fly is capable of cellular as well as humoral responses when faced with invaders: the phagocytosis is done by its plasmatocytes and its fat body produces an array of antimicrobial peptides. The signalling cascades involved in the production of these molecules represent the milestone of the similarity between the innate immune system of vertebrates and of the rest of the animal kingdom [25]. For these reasons, the fruit fly offers great potential to give insights on host-pathogen interactions. In fact, *Drosophila melanogaster* has already proven to be a great tool in the study of plant or fungal pathogens such as *Erwinia carotovora* [26] and *Cryptococcus neoformans* [27], but also of human opportunistic ones, such as *P. aeruginosa* [28].

In this work, we establish the use of the fruit fly as an effective model of infection for not only discriminating species and strains within the Bcc but also for the study of Bcc virulence factors. We also show that use of competitive index provides supplemental discriminating power for the characterization of virulence factors.

Results and Discussion

Burkholderia cepacia complex does not kill

D. melanogaster when fed to the fly

Validating the fruit fly as an effective model in the study of the virulence of the Bcc species seemed promising because *Drosophila* was already used successfully with other pathogenic bacteria. Two different methods have been employed to infect *Drosophila* with bacteria: fly feeding, which involves feeding starved flies with bacteria, and nicking, which implies pricking flies in the thorax with a needle dipped into bacterial suspension. For instance, both feeding and pricking infections performed with *P. aeruginosa* are lethal to the flies [28,29,30].

Hence, several species from the Bcc were first tested for their capacity to kill fruit flies following ingestion. Interestingly, *B. multivorans* LMG16660, *B. vietnamiensis* LMG 18835, *B. ambifaria* HSJ1, *B. pyrrocinia* LMG21824, *B. cenocepacia* K56-2, *B. cenocepacia* LMG18830, *B. dolosa* LMG21819 and *B. stabilis* LMG18870 were all incapable of producing mortality during the trials (data not shown). Variables that could potentially have an influence on infection outcomes were then modified: flies were deprived of food and water for 9 h instead of 7 h, the initial temperature of 21°C was raised to 25°C, and bacterial concentration on which flies were left to feed was doubled. Still, the flies were not killed by Bcc bacteria using this method. For several feeding assays, the bacterial concentration inside the flies was recorded to verify that the flies had indeed ingested bacteria. For instance, up to 1.9×10^5 CFU per fly could be recovered for *B. ambifaria* HSJ1 twenty days after the beginning of the infection, without visible adverse effect on the flies.

Since ingested Bcc species are able to colonize the flies without harming them, it is interesting to speculate that these bacterial species could behave as endo-residents of *Drosophila*. To date, however, no finding of any *Burkholderia* species in laboratory flies [31,32] or in natural populations [33] supports this hypothesis.

Fly pricking is effective at generating a mortal infection

Given that feeding the flies with Bcc strains did not produce any mortality, assays with the nicking method were conducted.

Figure 1 shows survival curves for *D. melanogaster* when challenged with *B. cenocepacia* strain K56-2 on three different assays. Results demonstrate that the method can reveal fly killing by a Bcc strain with effectiveness. No statistical difference was observable among survival curves (Log-rank (Mantel-Cox) test), showing that this method is highly reproducible and accurate.

Pricking experiments uncovered differences in terms of virulence between the Bcc species and strains, allowing discrimination between strains of one particular genomovar but also between Bcc genomovars. As a demonstration, flies were infected with five different wild-type strains of *B. cenocepacia* (genomovar III), revealing variability in infectious capacity between strains of the same Bcc genomovar (Figure 2). Among these strains, we tested K56-2 and J2315 two closely related strains belonging to the epidemic ET-12 lineage [34]. We observed that J2315 is less virulent than K56-2 in the *D. melanogaster* model, which is in agreement with recent data from Uehlinger and colleagues who reported that J2315 is also less virulent than K56-2 in two other alternative models, *G. mellonella* and *C. elegans* [35]. While strain LMG 18830 (CEP511) exhibits moderate virulence in the *Drosophila*, mouse and wax moth models, it produces very different infection outcomes in alfalfa (pathogenic) and *C. elegans* (non lethal) [18,19].

A number of other Bcc genomovars were then tested and found to display large differences in virulence toward *D. melanogaster* (Figure 3). *B. cepacia* strains were from different sources (one was first isolated from onions while the other is a clinical strain) and yet, both are among the most virulent strains in the fly pricking model (Figure 3A and B). They kill 100% of the flies within 3 days. These results are similar to what has been obtained with other hosts, murine or alternative models alike. These data obtained with *B. cepacia* illustrate also the environmental isolates appear particularly virulent in alternative infection models, and sometimes more virulent than the clinical isolates as also observed with the *C. elegans* model [19].

B. pyrrocinia LMG21824 and *B. ubonensis* LMG20358 kill flies in less than 75 hours, hence being among the most lethal to flies

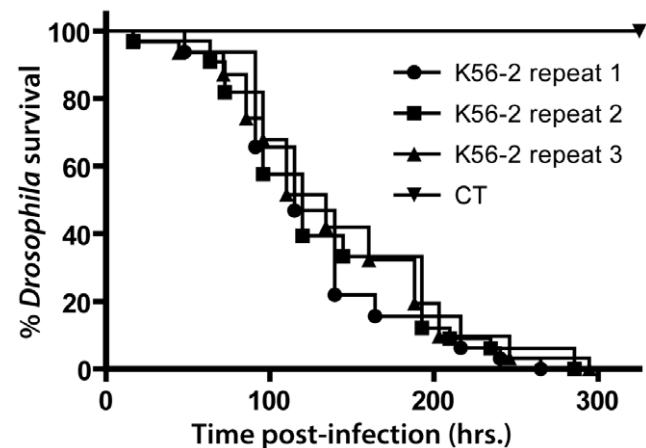


Figure 1. Survival curves for *D. melanogaster* flies challenged with *B. cenocepacia* K56-2. Pricking assays were performed in three independent replicates, each with a minimum of 30 flies. Statistical significance (Log-rank analysis (Mantel-Cox)) between survival curves is shown with * $p < 0.05$ and *** $p < 0.0005$. doi:10.1371/journal.pone.0011467.g001

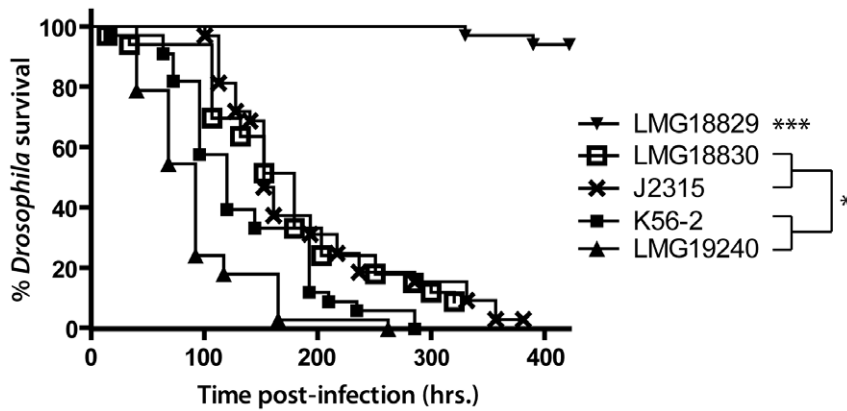


Figure 2. Survival curves for *D. melanogaster* infected with *B. cenocepacia* strains. Pricking assays were performed with a minimum of 30 flies for each strain. Statistical significance (Log-rank analysis (Mantel-Cox)) between survival curves is shown with * $p < 0.05$ and *** $p < 0.0005$. doi:10.1371/journal.pone.0011467.g002

(Figure 3K and L). There are no data in mammalian hosts for these two genomovars; however, they are among the most virulent strains in the *C. elegans* model [19].

B. stabilis (Figure 3D), *B. ambifaria* (Figure 3I and 3J) and *B. vietnamiensis* (Figure 3E and 3F) can be classified as intermediate in their virulence towards the fly. These results are consistent with previous work on mammals, on alfalfa and on *G. mellonella* [17,18]; the only exception being *B. ambifaria* CEP0996, scoring 3 on 3 in pathogenicity tests conducted with *C. elegans* [19].

At the other end of the pathogenicity spectrum, *B. multivorans* LMG16660 (Figure 3C) and *B. dolosa* LMG21819 (Figure 3G) are poorly virulent. The other tested *B. dolosa* strain, LMG21443 (Figure 3H), is slightly more virulent than LMG21819 but still takes more than 12 days to kill only 40% of the flies (Figure 3G and H). The latter *B. dolosa* strain was also avirulent in *C. elegans* [19] while strain LMG21443, more pathogenic to flies, had a LD_{50} of 40,000 CFU in *G. mellonella* [17] and a pathogenicity score of 2 on 3 with *C. elegans* [19].

The results obtained for *B. multivorans* LMG16660 (Figure 3C) are comparable to other works performed with alternative host models. For instance, no or very little mortality was observed with *C. elegans* [19] or alfalfa [18], even with several other strains of that species. *B. multivorans* strains C5393 and C1376 were tested in the rat agar bead model [18] and the animals once again showed very little signs of pathology. In this case, it was assumed to be because of a lower ability of the microorganism to grow in its host. However, poor growth or persistency of the bacteria cannot explain the lack of pathogenicity of *B. multivorans* towards flies. Indeed, 6.55×10^6 CFU per fly were recovered on day 8 following a septic injury. Experiments performed on *Panagrellus redivivus*, a nematode capable of surviving several days at 37°C revealed that *B. multivorans* strains were only able to kill the model at 37°C but not at 25°C suggesting that this genomovar carries virulence functions upregulated at 37°C [36].

Overall, there is a very good correlation between the results obtained in the fly pricking assay and those obtained with alternative or murine hosts.

Drosophila mortality correlates with bacterial growth and persistence *in vivo*

To verify the presence of bacteria in pricked flies throughout the infections, bacterial survival *in vivo* was measured for three Bcc strains. Figure 4 demonstrates that every strain tested was capable

of colonizing the fly and able to replicate inside the host, although with different rates.

The CFU/fly for the three strains measured one hour post infection were all equivalent: $4.55 \times 10^4 \pm 2.73 \times 10^4$ CFU per fly were recovered for *B. cenocepacia* LMG18830 while it was $4.63 \times 10^4 \pm 3.15 \times 10^4$ CFU per fly for *B. cenocepacia* K56-2 and $1.73 \times 10^4 \pm 8.26 \times 10^3$ CFU per fly for *B. cepacia* LMG18821. However, while it only took 1 day for *B. cepacia* LMG18821 CFUs to reach 10^6 CFU/fly, approximately 6 days were needed for *B. cenocepacia* LMG18830 to reach the same CFU number in the flies. Accordingly, *B. cepacia* LMG18821 kills flies much faster than *B. cenocepacia* LMG18830 or K56-2; all LMG18821-infected flies died in less than 50 hours whereas approximately 90% of the flies for K56-2 and LMG18830 were still alive at that time during infection. These results support the hypothesis that strains displaying slower *in vivo* growth rates also kill flies more gradually.

Fly mortality when infected with Bcc mutants

An effective alternative infection model should allow discrimination between virulent and avirulent bacterial strains. Since the pricking assay revealed conclusive, mutants of *B. cenocepacia* strain K56-2 previously reported to display reduced virulence towards mammals were thereby examined in the fly (Table S1). The *in vitro* growth rates of the mutants had been determined to be the same than the wild-type (data not shown).

Two zinc-dependent metalloproteases, ZmpA and ZmpB, known to cleave several proteins important in host defence, are clearly involved in the virulence of *B. cenocepacia* K56-2. Indeed, a *zmpA* mutant is less virulent in a rat chronic respiratory infection model [37], as is also the *zmpB* and the double *zmpA zmpB* mutants [38]. However, in *C. elegans*, *G. mellonella* and alfalfa, *zmpA* and *zmpB* mutants are as virulent as the wild-type K56-2 [35]. Significantly, in our fly pricking model the *zmpA* mutant is significantly less pathogenic than the wild-type strain, while the *zmpB* mutant does not show a reduced pattern of mortality (Figure 5A). Moreover, infections performed with the *zmpA-zmpB* double mutant produce survival curves very similar to the ones obtained with the *zmpA* mutant. One possible explanation for the lack of contribution of ZmpB in the fruit fly is that this protease is only active when the temperature reaches 28°C [38]. Indeed, our pricking experiments were conducted under a controlled temperature of 25°C. However, the report that a *zmpB* mutant was not attenuated in the *G. mellonella* and alfalfa models in experiments

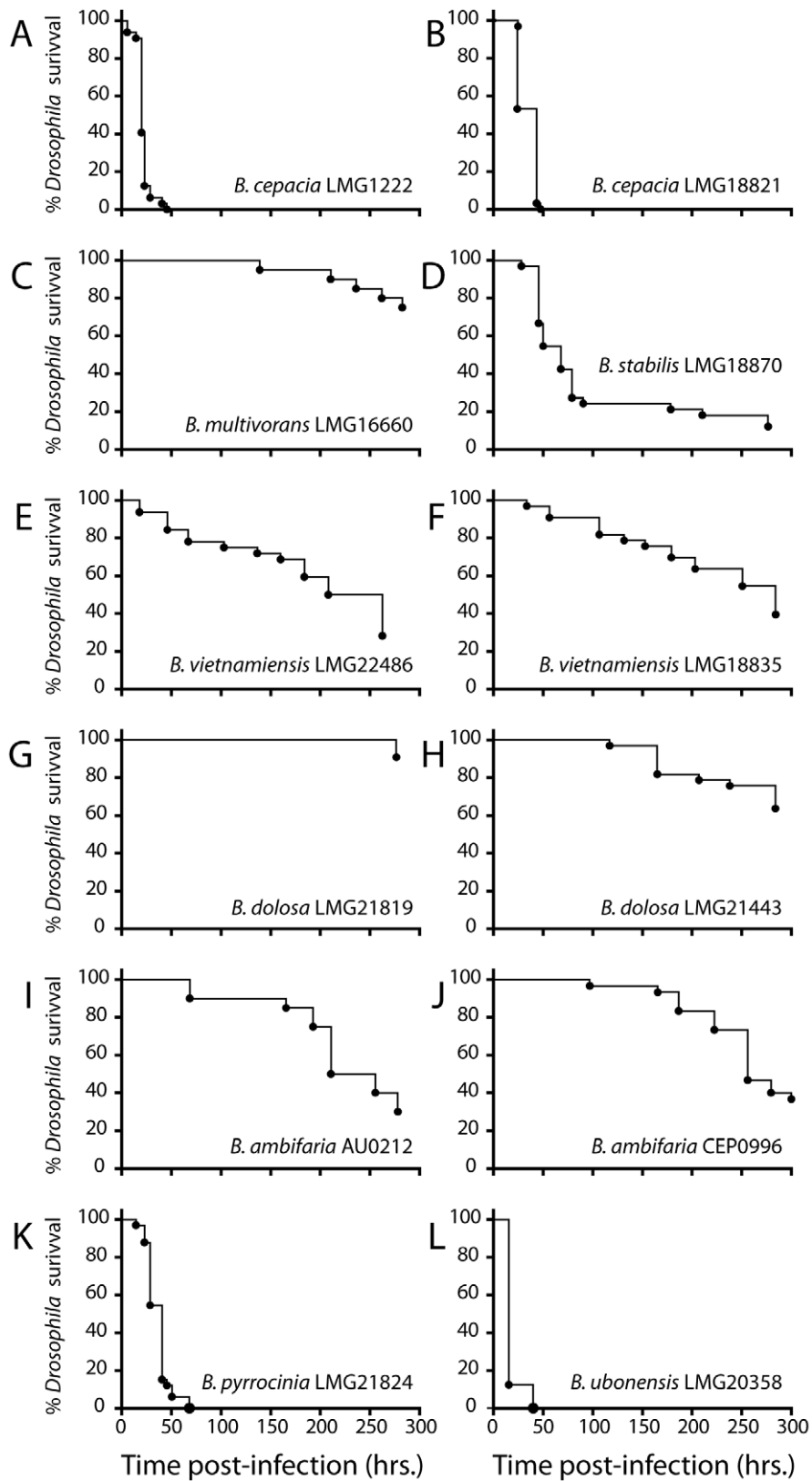


Figure 3. Survival curves for *D. melanogaster* infected with Bcc strains. Pricking assays were performed with a minimum of 30 flies for each strain. **A:** *B. cepacia* LMG1222, **B:** *B. cepacia* LMG18821, **C:** *B. multivorans* LMG16660, **D:** *B. stabilis* LMG18870, **E:** *B. vietnamiensis* LMG22486, **F:** *B. vietnamiensis* LMG18835, **G:** *B. dolosa* LMG21819, **H:** *B. dolosa* LMG21443, **I:** *B. ambifaria* AU0212, **J:** *B. ambifaria* CEP0996, **K:** *B. pyrrocinia* LMG21824, **L:** *B. ubonensis* LMG20358.

doi:10.1371/journal.pone.0011467.g003

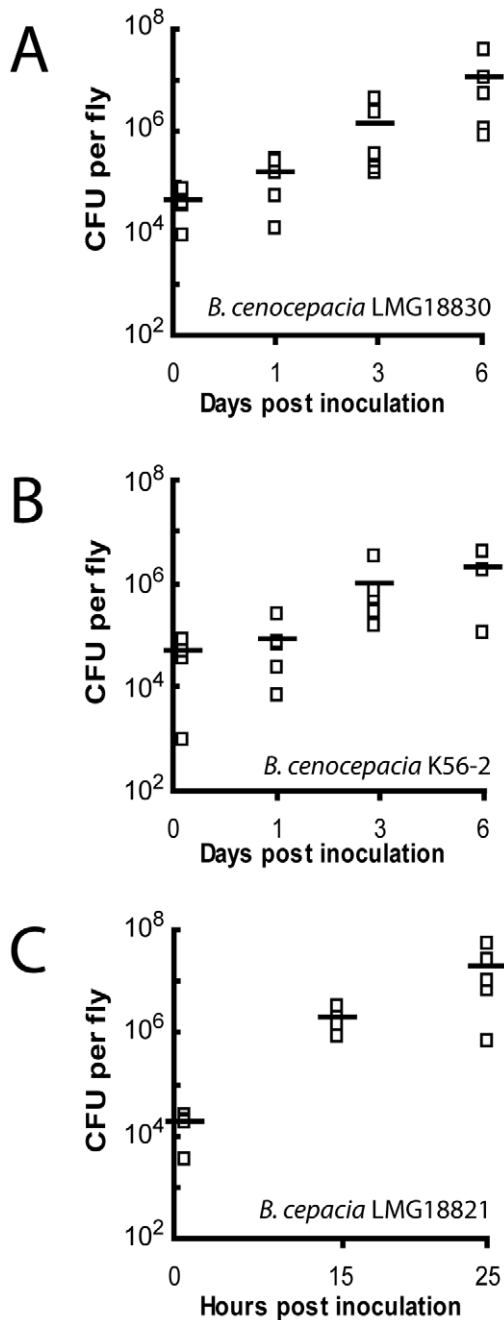


Figure 4. Relative bacterial load kinetic of fruit flies infected with various Bcc species. At the indicated time points, bacterial load was quantified from living fruit flies as described in Materials and Methods. **A:** *B. cenocepacia* LMG18830, **B:** *B. cenocepacia* K56-2, **C:** *B. cepacia* LMG18821. doi:10.1371/journal.pone.0011467.g004

performed respectively at 30 and 37°C does not support this hypothesis [35].

Another protease HtrA is required for survival to environmental stress [39]. *B. cenocepacia* K56-2 strains RSF13 and RSF12 are deficient for the production of this protease (mutation in BCAL2829 gene encoding for the HtrA protease and mutation in a two-component regulatory system, respectively). Experiments performed in the rat agar bead model showed these two strains cannot survive *in vivo* during lung infections [39]. However, we

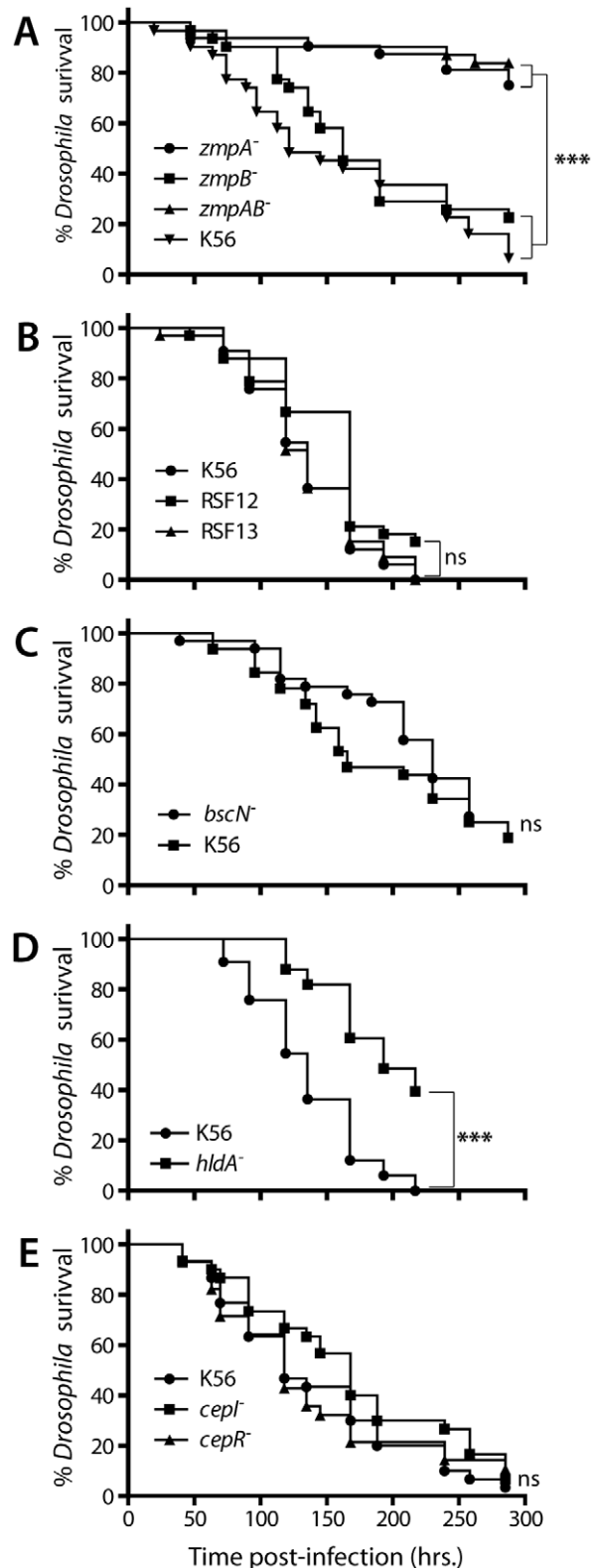


Figure 5. Survival curves for *D. melanogaster* infected with mutants of *B. cenocepacia* K56-2. The killing ability of wild-type *B. cenocepacia* K56-2 was compared to several mutants: **A:** *zmpA*⁻, *zmpB*⁻ and *zmpA**zmpB*⁻, **B:** RSF12 and RSF13. **C:** *bscN*⁻, **D:** *hldA*⁻, **E:** *cepI*⁻ and *cepR*⁻. Pricking assays were performed with a minimum of 30 flies for each strain. Statistical significance (Log-rank analysis (Mantel-Cox)) between survival curves is shown with ****p* < 0.0005 and ns = non-significant. doi:10.1371/journal.pone.0011467.g005

observed no difference for these two strains compared to the virulence of the wild-type strain in *Drosophila* survival experiments (Figure 5B). A result also obtained with *C. elegans*, *G. mellonella* and alfalfa (Table S1)[35].

Bcc, as a wide range of bacterial pathogens, utilizes a type III secretion system to deliver virulence proteins directly into target host cells. BscN is a Type III secretion system ATP-binding protein that likely generates energy for the secretion of virulence proteins [14]. In the mouse agar bead model, CFU recovered from the lungs and spleens were significantly lower for *bscN* mutants [14]. Our trials conducted with the *bscN* mutant of strain K56-2 shows a partial difference in fly mortality pattern when compared to the parental strain (Figure 5C). This experiment, performed in triplicate, was repeated on two occasions and each time produced similar results: a subtle pathogenicity lag for the *bscN* mutant about mid-time post-infection. Interestingly, a *bscN* mutant of *B. cenocepacia* H111 also gave mixed infection outcomes when performed on *C. elegans*: difference between wild-type and *bscN* mutant could only be observed at particular time-points post-infection [21].

The role of LPS as a virulence factor of *B. cenocepacia* has been tested using strain SAL1 defective in the expression of *hldA* and *hldD* genes, which code for enzymes involved in the synthesis of complete LPS core oligosaccharides [40]. Results in the rat agar bead model of chronic lung infection showed a reduced infectious capability for the SAL1 strain [40]. The rats had in fact completely cleared the mutant two weeks after infection. We also found SAL1 to be attenuated in the *D. melanogaster* infection model (Figure 5D). Decreased virulence of this mutant was also observed in *G. mellonella* and *C. elegans* (Table S1)[35]. Mutations in LPS structure make the cells more sensitive to antimicrobial peptides, a key component of the host innate immune defense response, notably in *Drosophila* [36]. Thus an increased susceptibility to antimicrobial peptides could explain the results obtained with strain SAL1.

The *cepI* and *cepR* genes are part of a quorum sensing system widely found in Bcc species [41]. These genes affect the expression of various virulence factors, notably the zinc-dependent metalloproteases *ZmpA* and *ZmpB* [41,42]. Both *cepI* and *cepR* mutants have shown a decrease in mean percentage of lung inflammation in the rat agar bead infection model when compared to wild-type K56-2 [42]. In our fly pricking model, the *cepR* and *cepI* mutants are not attenuated (Figure 5E). Accordingly, the *cepI* mutant of K56-2 is as virulent as the wild-type strain in two infection models: *G. mellonella* and alfalfa. However, the same mutant showed reduced killing of *C. elegans* [35]. This divergence from the other infection models is probably due to *AidA*, a protein regulated by quorum sensing and one of the major virulence factors for *C. elegans* pathogenicity [43].

Competitive index assays

Usually, virulence with alternative models is evaluated in terms of lethality (time, or number of bacteria, LD₅₀, required to kill the infected host). Some information may however be lost in the process. Also, if a gene mutation does not increase the mortality rate of the flies, it does not necessarily mean that the gene product does not play a role in the virulence of the bacterium. CI is a well-established, sensitive method to examine bacterial virulence in mammalian host such as the mouse or the rat [44,45]. These assays provide information on the capacity of a mutant strain to compete *in vivo* with the wild-type strain. For several genes investigated in our pricking assays (e.g. *hldA* or *htrA*), their role as virulence determinants had previously been demonstrated by CI analysis in the rat agar bead model [39,40].

To provide enhanced sensitivity and discriminating power to the fly mortality tests, CI was adapted to be performed in *Drosophila*

(see Materials and methods for details). The CI is defined as the ratio between the mutant strain and the wild-type in the output (96 h post-infection) divided by the ratio of the two strains in the input (inoculum).

In preliminary studies, we observed that the bacterial concentration used as inoculum or the choice of the time point for the output have no effect on the CI value (data not shown). Figure 6A shows three independent tests performed with the *zmpA* mutant that all produced very similar mean indices, confirming

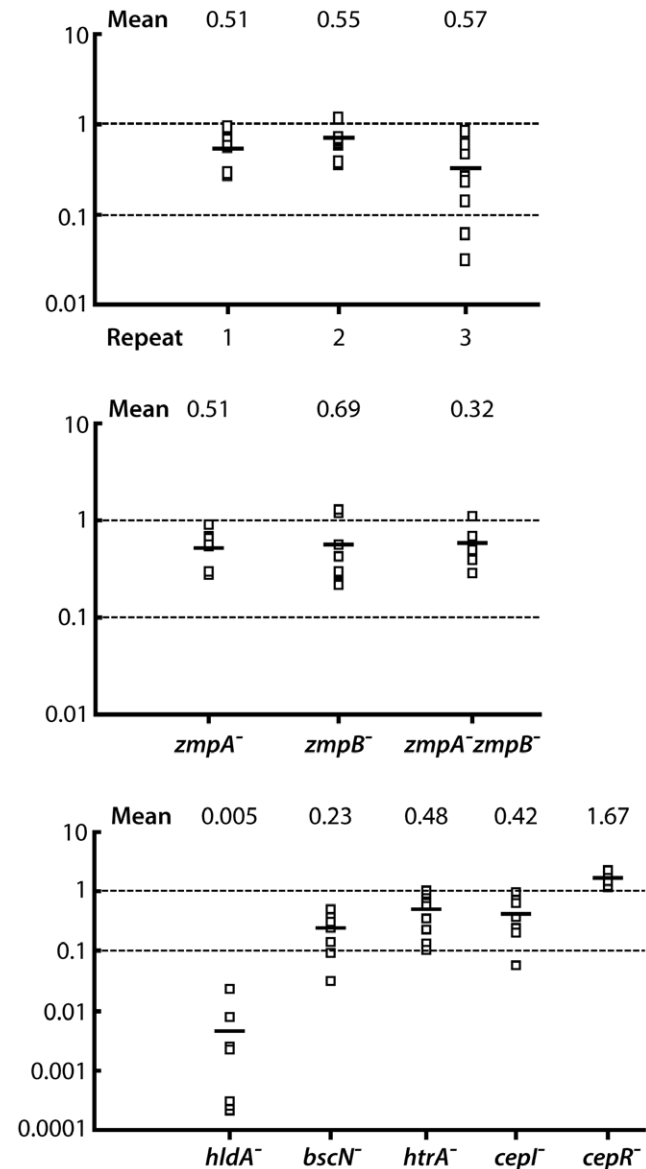


Figure 6. Competitive index (CI) analysis of *B. cenocepacia* mutants in the *D. melanogaster* model. CI is defined as the ratio between the wild-type K56-2 and the mutant in the output (bacteria recovered from the fruit fly 96 h post infection) divided by their ratio in the input (inoculum). Each empty square represents the CI value obtained for one fly. A CI of less than 1 indicates a virulence defect. The mean of the CI is shown as a solid line. **A.** Three independent CI analyses performed with *zmpA* mutant. **B.** CI analyses of *zmpA*, *zmpB* and *zmpA zmpB* mutants. **C.** CI analyses of *hldA*, *bscN*, BCAL2831, *cepI* and *cepR* mutants. For *htrA*, the CI was determined with strain RSF12 containing a mutation in the BCAL2831 gene. doi:10.1371/journal.pone.0011467.g006

the reproducibility of the approach. For each experiment, the small variability between individual indices also highlights the precision of the results and further validates the method. In every case, mean CIs were all below 1, which indicates that the *zmpA* mutant is less competitive than the wild-type *in vivo*.

During the pricking experiments, the *zmpB* mutant could not be differentiated from its parental strain (Figure 5A). However, the CI results revealed that this mutant is actually less competitive than the wild-type (Figure 6B). It was also hard to differentiate the *Drosophila* survival curves of *zmpA* from those of the double mutant *zmpA zmpB*. CI assays unravelled a difference between the strains: as expected, the double *zmpA zmpB* mutant proved less competitive than the single *zmpA* or *zmpB* mutants.

Similarly, CI assays were performed with the RSF12 strain and revealed that this mutant is less competitive than the wild-type (Figure 6C). This result is in concordance with those previously reported for rats by Flannagan *et al.* [39]. In fact, in this latter study, conclusions regarding virulence were only based on CI where both RSF12 and RSF13 could not compete against the parental strain K56-2 and were completely cleared by the rats [39]. Our data with CI in *D. melanogaster* confirm that HtrA is involved in bacterial survival *in vivo*.

Mortality assays performed with the *bscN* mutant showed only a partial difference with K56-2 wild-type (Figure 5C). In contrast, CI experiments clearly exposed the weakness of the *bscN* mutant (Figure 6C). The CI tests shed more light on the importance of type III secretion system in the pathogenesis of Bcc. CI performed with the mutant *hldA* (strain SAL1) produced the lowest CI observed, with a low mean result of 0.005 and a dramatic defect in *in vivo* survival. This result also highlights data obtained with the rat agar bead model of chronic lung infection [40].

Finally, the *cepI* mutant is less competitive than the wild-type, with a mean value of 0.42 for the CI. Interestingly, we obtained a value of 1.67 for the *cepR* mutant, which indicates that this mutant is more competitive than K56-2 wild-type in the fruit fly (Figure 6C). In *B. cenocepacia*, CepR functions both as a positive and negative regulator of virulence factors [46]. One possibility is that CepR downregulates genes required for *in vivo* survival. CI in mammalian host has, to the best of our knowledge, never been performed with *cepI* or *cepR* mutants. Thus, a *cepR* mutant would be more competitive than the wild-type in mouse or rat models.

Taken together, not only CI experiments confirm results obtained with survival curves (e.g. for *zmpA* and *hldA* mutants) but also reveals new information not detectable by mortality tests (e.g. with *zmpB*, *bscN* or *cepR* mutants). We show for the first time that CI analysis can be used with invertebrate model hosts with results in accordance with those obtained with mammalian models.

Conclusion: potential of the *Drosophila* model

Several pathogens express virulence functions only above specific temperatures. Unlike *G. mellonella* or the murine model, both *D. melanogaster* and *C. elegans* cannot survive very long at 37°C [47]. This could represent a drawback for the fruit fly as a host-model because *Drosophila* experiments are usually performed at temperatures of 21°C or 25°C. Studies with *Salmonella enterica* serovar Typhimurium have however been conducted at temperatures as high as 29°C [48]; and although the fly's life expectancy was somewhat shortened by the higher temperature, it still showed a difference between the mock and the true infection.

Results presented here clearly demonstrate the validity of the *Drosophila* pricking model in the study of Bcc virulence. As well as being a powerful tool for identifying Bcc virulence factors, *D. melanogaster* can enhance our understanding of host-pathogen

interactions. The sequenced genome of the fly allows microarrays experiments to be performed [49,50]. Fluorescent proteins, such as GFP, have also been used before to monitor *P. aeruginosa* [51,52], *Escherichia coli* [53], and *Serratia marcescens* [54] and *S. Typhimurium* [48] proliferation in the fly among others, but also to follow the expression of its immunity factors [55,56]. Such techniques could well be applied to the study of Bcc strains.

Surette and colleagues recently reported the use of *D. melanogaster* as a host for co-infections by *P. aeruginosa* concomitant with bacteria from the CF airways microflora [52]. They discovered that some strains, non-pathogenic on their own, became infectious when in presence of *P. aeruginosa*. Knowing that essentially no environments are colonized by only one bacterial species, *Drosophila* infections opens an exciting door in the investigation of polymicrobial interactions and could most likely be used in the same fashion with the various Bcc strains [57].

Materials and Methods

Bacterial strains and culture conditions

Bcc strains used in this study are listed in Table 1. *Escherichia coli* SM10 λ pir (*thi-1 thr leu tonA lacY supE recA::RP4-2-Tc::Mu Km^r λ pir*) served as donor for conjugation experiments [58]. Unless stated otherwise, Bcc strains were routinely grown in tryptic soy broth (TSB) (Difco) at 37°C with shaking (240 rpm) or on TSB agar plates. When required, antibiotics were added at the following final concentrations: 75 μ g/ml trimethoprim and 200 μ g/ml tetracycline.

Growth rates were verified with a Microbiology Bioscreen C Reader (Labsystems, Finland) in 100-well microplates using 200 μ l of TSB. The optical density of the cultures was measured with the wideband 420–580 nm filter.

Construction of mutants

A 394-bp internal fragment of *cepI* and a 553-bp fragment of *bscN* were amplified from *B. cenocepacia* K56-2 using the following primers (Table 2): cepIF with a *KpnI* site and cepIR with a *XbaI* site for the *cepI* gene, and primers bscNF and bscNR for the *bscN* gene with the same restriction sites. The PCR products were digested with *KpnI* and *XbaI* and ligated to the *XbaI* and *KpnI* sites of the suicide vector pKNOCK-Tet [59]. The constructs were then electroporated into *E. coli* SM10 cells. The plasmids were then mobilized from SM10 into *B. cenocepacia* K56-2 cells by mating. Single-crossover insertion mutants were selected on TSB agar containing tetracycline. Plasmid insertion into the target gene was confirmed by PCR. The same procedure was used for the construction of the *B. cenocepacia zmpA zmpB* double mutant: a 547-bp internal fragment of *zmpB* was amplified from *B. cenocepacia* K56-2 using primers zmpBF with a *KpnI* site and zmpBF with a *XbaI* site. It was then cloned in the *XbaI* and *KpnI* sites of pKNOCK-Tet. *B. cenocepacia* K56-2 *zmpA* was used as the recipient strain. Single-crossover insertion mutants were selected on TSB agar containing trimethoprim and tetracycline.

D. melanogaster stock and maintenance

Wild-type Oregon R flies were used throughout this study. They were maintained on standard cornmeal sucrose medium and kept in a controlled environment of 25°C and 65% humidity with a 12-hours light cycle (Percival Scientific incubator). All experiments were conducted under these conditions unless stated otherwise.

Fly feeding assays

Oregon R wild-type flies, typically seven days old, were infected by a feeding assay modified from Chugani *et al.* [29]. Plastic vials

Table 1. *Burkholderia cepacia* complex strains used in this study.

Strains ^a	Description (location)	References
<i>B. cepacia</i> (gen. I) LMG1222	Environmental isolate, onion (USA)	[61]
<i>B. cepacia</i> (gen. I) LMG18821	CF isolate (Australia)	[61]
<i>B. multivorans</i> (gen. II) LMG16660	CF isolate, (UK)	[61]
<i>B. cenocepacia</i> (gen. III) J2315	CF isolate (UK)	[61]
<i>B. cenocepacia</i> (gen. III) LMG18830	CF isolate (Australia)	[61]
<i>B. cenocepacia</i> (gen. III) LMG19240	Environmental isolate, wheat (Australia)	[62]
<i>B. cenocepacia</i> (gen. III) LMG18829	CF isolate (USA)	[61]
<i>B. cenocepacia</i> (gen. III) K56-2	CF isolate (Canada)	[61]
<i>B. cenocepacia</i> K56-2 <i>zmpA</i>	<i>zmpA::tp</i> , Tp ^f	[37]
<i>B. cenocepacia</i> K56-2 <i>zmpB</i>	<i>zmpB::tp</i> , Tp ^f	[38]
<i>B. cenocepacia</i> K56-2 <i>zmpA zmpB</i>	<i>zmpA::tp zmpB::pKNOCK-Tet</i> , Tp ^f Tet ^r	this study
<i>B. cenocepacia</i> K56-2 <i>cepR</i>	<i>cepR::Tn5-OT182</i> , Tet ^r	[41]
<i>B. cenocepacia</i> K56-2 <i>cepl</i>	<i>cepl::pKNOCK-Tet</i> , Tet ^r	this study
<i>B. cenocepacia</i> K56-2 <i>bscN</i>	<i>bscN::pKNOCK-Tet</i> , Tet ^r	this study
<i>B. cenocepacia</i> K56-2 SALI	<i>hldA::tp</i> , Tp ^f	[40]
<i>B. cenocepacia</i> K56-2 RSF12	BCAL2831::pRF103, Tp ^f	[39]
<i>B. cenocepacia</i> K56-2 RSF13	<i>htrA::pRF109</i> , Tp ^f	[39]
<i>B. stabilis</i> (gen. IV) LMG18870	CF isolate (Canada)	[61]
<i>B. vietnamiensis</i> (gen.V) LMG22486	Water treatment (USA)	[63]
<i>B. vietnamiensis</i> (gen.V) LMG18835	CF isolate (USA)	[63]
<i>B. dolosa</i> (gen.VI) LMG21819	CF isolate (USA)	[64]
<i>B. dolosa</i> (gen.VI) LMG21443	Environmental isolate, root (Senegal)	[64]
<i>B. ambifaria</i> (gen. VII) HSJ1	CF isolate (Canada)	[65]
<i>B. ambifaria</i> (gen. VII) CEP0996	CF isolate (Canada)	[66]
<i>B. ambifaria</i> (gen. VII) AU0212	CF isolate (USA)	[66]
<i>B. pyrrocinia</i> (gen. IX) LMG21824	CF isolate (UK)	[64]
<i>B. ubonensis</i> (gen. X) LMG20358	Environmental isolate, soil (Thailand)	[66]

^aGenomovar status is indicated in parentheses.

doi:10.1371/journal.pone.0011467.t001

containing 5 ml of 5% sucrose and 1.5% agar were prepared. Whatman filter disks (2.3-cm diameter) were placed inside these vials on top of the agar surface. Bacterial cultures were grown in TSB to an OD₆₀₀ of 4. Cells were then collected by centrifuging 1 ml of each culture at 7,500 × g, washed once with 1 ml sterile PBS/5% sucrose solution and resuspended in 70 μl sterile PBS/5% sucrose. Bacterial suspensions were added to the surface of the filter paper in the plastic vials and let to dry for 15 min.

Flies starved for food and water for 7 h were anaesthetised with CO₂ and transferred to the vials per batches of 10 to 11 for a minimum of 30 flies per experiment. They were left to feed on the bacteria, and consequent death was recorded everyday. Control vials were inoculated with 70 μl sterile PBS/5% sucrose.

Table 2. Primers used in this study.

Primer	Primer sequence (5'-3') ^a
ceplF	GGGGTACCCAGTTTCGAGCGTGACCAGTT
ceplR	GCTCTAGAGCAGACGCCCTACTACCTGCT
bscNF	GGGGTACCCCGCAATTCATCGAGCACAG
bscNR	GCTCTAGAGCAGCTCGATCTCTGGTA
zmpBF	GGGGTACCCGCCGTGAACGTGTACTACCA
zmpBR	GCTCTAGAGCCTTCAGGAACGCCCTTGTC

^aRestriction sites designed into the primers are underlined.

doi:10.1371/journal.pone.0011467.t002

Fly pricking assays

Adult female flies of 8 ± 2 days old were infected according to a protocol modified from Baldini *et al.* [60] and Tzou *et al.* [56]. The flies were anaesthetised with CO₂ and pricked in the dorsal thorax with a 26S-gauge Hamilton needle previously dipped in the appropriate bacterial cell suspension. Bacterial cultures were grown in TSB to an OD₆₀₀ of 2. Cells were then collected by centrifuging 1 ml of culture at 7,500 × g, washed once with 1 ml of sterile 10 mM MgSO₄ supplemented with 500 μg/ml ampicillin and resuspended in 1 ml of the same buffer. The addition of ampicillin to the buffer was done to prevent a possible infection with bacteria present on the surface of the fly. For every bacterial strain to be tested, a minimum of 30 flies were pricked and subsequently distributed by groups of 9 to 11 in a plastic vial containing 5 ml of 1.5% agar and 5% sucrose. Ten control flies were pricked with a solution of 10 mM MgSO₄ supplemented with ampicillin. The needle was washed between every replicate with 70%-grade ethanol and rinsed with the MgSO₄ buffer. Fly survival was scored daily.

Bacterial growth *in vivo*

Between twenty and thirty flies were pricked with bacterial cell suspension prepared as described in the fly pricking assays section. To monitor bacterial loads of the flies during the course of an infection, the number of CFU per fly on specific days following infection were recorded as follow: flies were individually put in microfuge tubes containing 70%-grade ethanol and surface-sterilized by mixing by inversion for 1 min. They were then rinsed for 1 min. in sterile water and individually grinded in 200 μl of sterile PBS with a micropestle. The suspensions obtained were then serially diluted in 0.8% NaCl and plated on TSB agar containing 25 μg/ml gentamycin and 25 μg/ml polymyxin B. For the time point regarded as zero, flies were allowed to rest for 1 h after infection before anaesthesia and homogenization as described above. Five living flies were used for each time point in order to quantify bacterial loads.

Statistical analysis

Survival data was analyzed using Kaplan-Meier survival curves using the GraphPrism 5.0 software. Significance between survival curves was assessed using the Log-rank (Mantel-Cox) test.

Competitive index analyses

For these experiments, bacterial cultures were grown in TSB to an OD₆₀₀ of 1. A 1:1 ratio mix (approximately 10⁶ CFU/ml of wild-type and mutant) was prepared in 10 mM MgSO₄ with 500 μg/ml ampicillin. The CFUs for the two strains used in the input were counted by plating the serial dilutions of the bacterial

solution using the appropriate antibiotics so to distinguish the strains. Flies were then injected with the bacterial mixture. Ninety-six hours following infection, 8 flies were sacrificed according to the method described for the measurement of *in vivo* bacterial growth. Strain discrimination was then performed by plating the bacterial suspension on TSB with the appropriate antibiotics. TSB agar contained 25 µg/ml gentamycin to determine total bacterial number; contained 25 µg/ml gentamycin and 75 µg/ml trimethoprim for mutants carrying a trimethoprim selection (*zmpA*, *zmpB*, *zmpA zmpB*, *htrA*, *hldA* mutants), or contained 25 µg/ml gentamycin and 200 µg/ml tetracycline for *cepI*, *cepR* and *bscN* mutants selection. The competitive index (CI) is defined as the CFU output ratio of the mutant strain when compared to the wild-type strain, divided by the CFU input ratio (inoculum) of the mutant over the wild-type.

Supporting Information

Table S1 Virulence of various *B. cenocepacia* K56-2 in different infection models.

References

- Burkholder W (1950) Sour skin, a bacterial rot of onion bulbs. *Phytopathology* 64: 468–475.
- Chiarini L, Bevivino A, Dalmastrì C, Tabacchioni S, Visca P (2006) *Burkholderia cepacia* complex species: health hazards and biotechnological potential. *Trends Microbiol* 14: 277–286.
- Vial L, Groleau MC, Dekimpe V, Déziel E (2007) *Burkholderia* diversity and versatility: an inventory of the extracellular products. *J Microbiol Biotechnol* 17: 1407–1429.
- Aaron SD, Ferris W, Henry DA, Speert DP, Macdonald NE (2000) Multiple combination bactericidal antibiotic testing for patients with cystic fibrosis infected with *Burkholderia cepacia*. *Am J Respir Crit Care Med* 161: 1206–1212.
- Weber DJ, Rutala WA, Sickbert-Bennett EE (2007) Outbreaks associated with contaminated antiseptics and disinfectants. *Antimicrob Agents Chemother* 51: 4217–4224.
- Martin DW, Mohr CD (2000) Invasion and intracellular survival of *Burkholderia cepacia*. *Infect Immun* 68: 24–29.
- Lamothe J, Huynh KK, Grinstein S, Valvano MA (2007) Intracellular survival of *Burkholderia cenocepacia* in macrophages is associated with a delay in the maturation of bacteria-containing vacuoles. *Cell Microbiol* 9: 40–53.
- Marolda CL, Hauröder B, John MA, Michel R, Valvano MA (1999) Intracellular survival and saprophytic growth of isolates from the *Burkholderia cepacia* complex in free-living amoebae. *Microbiology* 145 (Pt7): 1509–1517.
- Coenye T, Vandamme P, Govan JR, LiPuma JJ (2001) Taxonomy and identification of the *Burkholderia cepacia* complex. *J Clin Microbiol* 39: 3427–3436.
- McCleane S, Callaghan M (2009) *Burkholderia cepacia* complex: epithelial cell-pathogen confrontations and potential for therapeutic intervention. *J Med Microbiol* 58: 1–12.
- Mahenthiralingam E, Baldwin A, Dowson CG (2008) *Burkholderia cepacia* complex bacteria: opportunistic pathogens with important natural biology. *J Appl Microbiol* 104: 1539–1551.
- Vanlaere E, Lipuma JJ, Baldwin A, Henry D, De Brandt E, et al. (2008) *Burkholderia latens* sp. nov., *Burkholderia diffusa* sp. nov., *Burkholderia arboris* sp. nov., *Burkholderia seminialis* sp. nov. and *Burkholderia metallica* sp. nov., novel species within the *Burkholderia cepacia* complex. *Int J Syst Evol Microbiol* 58: 1580–1590.
- Sajjan U, Thanassoulis G, Cherapanov V, Lu A, Sjölin C, et al. (2001) Enhanced susceptibility to pulmonary infection with *Burkholderia cepacia* in Cfr(–/–) mice. *Infect Immun* 69: 5138–5150.
- Tomich M, Griffith A, Herfst CA, Burns JL, Mohr CD (2003) Attenuated virulence of a *Burkholderia cepacia* type III secretion mutant in a murine model of infection. *Infect Immun* 71: 1405–1415.
- Sousa SA, Ulrich M, Bragonzi A, Burke M, Worlitzsch D, et al. (2007) Virulence of *Burkholderia cepacia* complex strains in gp91phox^{-/-} mice. *Cell Microbiol* 9: 2817–2825.
- Chu KK, Davidson DJ, Halsey TK, Chung JW, Speert DP (2002) Differential persistence among genomovars of the *Burkholderia cepacia* complex in a murine model of pulmonary infection. *Infect Immun* 70: 2715–2720.
- Seed KD, Dennis JJ (2008) Development of *Galleria mellonella* as an alternative infection model for the *Burkholderia cepacia* complex. *Infect Immun* 76: 1267–1275.
- Bernier SP, Silo-Suh L, Woods DE, Ohman DE, Sokol PA (2003) Comparative analysis of plant and animal models for characterization of *Burkholderia cepacia* virulence. *Infect Immun* 71: 5306–5313.
- Cardona ST, Wopperer J, Eberl L, Valvano MA (2005) Diverse pathogenicity of *Burkholderia cepacia* complex strains in the *Caenorhabditis elegans* host model. *FEMS Microbiol Lett* 250: 97–104.
- Jander G, Rahme LG, Ausubel FM (2000) Positive correlation between virulence of *Pseudomonas aeruginosa* mutants in mice and insects. *J Bacteriol* 182: 3843–3845.
- Markey KM, Glendinning KJ, Morgan JA, Hart CA, Winstanley C (2006) *Caenorhabditis elegans* killing assay as an infection model to study the role of type III secretion in *Burkholderia cenocepacia*. *J Med Microbiol* 55: 967–969.
- Adams MD, Celniker SE, Holt RA, Evans CA, Gocayne JD, et al. (2000) The genome sequence of *Drosophila melanogaster*. *Science* 287: 2185–2195.
- Fallon PG, Allen RL, Rich T (2001) Primitive Toll signalling: bugs, flies, worms and man. *Trends Immunol* 22: 63–66.
- Medzhitov R, Preston-Hurlburt P, Janeway CA, Jr. (1997) A human homologue of the *Drosophila* Toll protein signals activation of adaptive immunity. *Nature* 388: 394–397.
- Hoffmann JA, Reichhart JM (2002) *Drosophila* innate immunity: an evolutionary perspective. *Nat Immunol* 3: 121–126.
- Nicolas E, Reichhart JM, Hoffmann JA, Lemaître B (1998) In vivo regulation of the IkappaB homologue cactus during the immune response of *Drosophila*. *J Biol Chem* 273: 10463–10469.
- Apidianakis Y, Rahme LG, Heitman J, Ausubel FM, Calderwood SB, et al. (2004) Challenge of *Drosophila melanogaster* with *Cryptococcus neoformans* and role of the innate immune response. *Eukaryot Cell* 3: 413–419.
- D'Argenio DA, Gallagher LA, Berg CA, Manoil C (2001) *Drosophila* as a model host for *Pseudomonas aeruginosa* infection. *J Bacteriol* 183: 1466–1471.
- Chugani SA, Whiteley M, Lee KM, D'Argenio D, Manoil C, et al. (2001) QscR, a modulator of quorum-sensing signal synthesis and virulence in *Pseudomonas aeruginosa*. *Proc Natl Acad Sci U S A* 98: 2752–2757.
- Lutter EI, Faria MM, Rabin HR, Storey DG (2008) *Pseudomonas aeruginosa* cystic fibrosis isolates from individual patients demonstrate a range of levels of lethality in two *Drosophila melanogaster* infection models. *Infect Immun* 76: 1877–1888.
- Brummel T, Ching A, Seroude L, Simon AF, Benzer S (2004) *Drosophila* lifespan enhancement by exogenous bacteria. *Proc Natl Acad Sci U S A* 101: 12974–12979.
- Roh SW, Nam YD, Chang HW, Kim KH, Kim MS, et al. (2008) Phylogenetic characterization of two novel commensal bacteria involved with innate immune homeostasis in *Drosophila melanogaster*. *Appl Environ Microbiol* 74: 6171–6177.
- Cox CR, Gilmore MS (2007) Native microbial colonization of *Drosophila melanogaster* and its use as a model of *Enterococcus faecalis* pathogenesis. *Infect Immun* 75: 1565–1576.
- Mahenthiralingam E, Vandamme P, Campbell ME, Henry DA, Gravelle AM, et al. (2001) Infection with *Burkholderia cepacia* complex genomovars in patients with cystic fibrosis: virulent transmissible strains of genomovar III can replace *Burkholderia multivorans*. *Clin Infect Dis* 33: 1469–1475.
- Uehlinger S, Schwager S, Bernier SP, Riedel K, Nguyen DT, et al. (2009) Identification of Specific and Universal Virulence Factors in *Burkholderia cenocepacia* Strains by Using Multiple Infection Hosts. *Infect Immun* 77: 4102–4110.
- Laws TR, Smith SA, Smith MP, Harding SV, Atkins TP, et al. (2005) The nematode *Panagrellus redivivus* is susceptible to killing by human pathogens at 37 degrees C. *FEMS Microbiol Lett* 250: 77–83.
- Corbett CR, Burtneck MN, Kooi C, Woods DE, Sokol PA (2003) An extracellular zinc metalloprotease gene of *Burkholderia cepacia*. *Microbiology* 149: 2263–2271.
- Kooi C, Subsin B, Chen R, Pohorelec B, Sokol PA (2006) *Burkholderia cenocepacia* ZmpB is a broad-specificity zinc metalloprotease involved in virulence. *Infect Immun* 74: 4083–4093.

39. Flannagan RS, Aubert D, Kooi C, Sokol PA, Valvano MA (2007) *Burkholderia cenocepacia* requires a periplasmic HtrA protease for growth under thermal and osmotic stress and for survival in vivo. *Infect Immun* 75: 1679–1689.
40. Loutet SA, Flannagan RS, Kooi C, Sokol PA, Valvano MA (2006) A complete lipopolysaccharide inner core oligosaccharide is required for resistance of *Burkholderia cenocepacia* to antimicrobial peptides and bacterial survival in vivo. *J Bacteriol* 188: 2073–2080.
41. Lewenza S, Conway B, Greenberg EP, Sokol PA (1999) Quorum sensing in *Burkholderia cepacia*: identification of the LuxRI homologs CepRI. *J Bacteriol* 181: 748–756.
42. Sokol PA, Sajjan U, Visser MB, Gingues S, Forstner J, et al. (2003) The CepIR quorum-sensing system contributes to the virulence of *Burkholderia cenocepacia* respiratory infections. *Microbiology* 149: 3649–3658.
43. Huber B, Feldmann F, Kothe M, Vandamme P, Wopperer J, et al. (2004) Identification of a novel virulence factor in *Burkholderia cenocepacia* H111 required for efficient slow killing of *Caenorhabditis elegans*. *Infect Immun* 72: 7220–7230.
44. Hunt TA, Kooi C, Sokol PA, Valvano MA (2004) Identification of *Burkholderia cenocepacia* genes required for bacterial survival in vivo. *Infect Immun* 72: 4010–4022.
45. Kukavica-Ibrulj I, Bragonzi A, Paroni M, Winstanley C, Sanschagrin F, et al. (2008) In vivo growth of *Pseudomonas aeruginosa* strains PAO1 and PA14 and the hypervirulent strain LESB58 in a rat model of chronic lung infection. *J Bacteriol* 190: 2804–2813.
46. Riedel K, Arevalo-Ferro C, Reil G, Gorg A, Lottspeich F, et al. (2003) Analysis of the quorum-sensing regulon of the opportunistic pathogen *Burkholderia cepacia* H111 by proteomics. *Electrophoresis* 24: 740–750.
47. Mylonakis E, Aballay A (2005) Worms and flies as genetically tractable animal models to study host-pathogen interactions. *Infect Immun* 73: 3833–3841.
48. Brandt SM, Dionne MS, Khush RS, Pham LN, Vigdal TJ, et al. (2004) Secreted Bacterial Effectors and Host-Produced Eiger/TNF Drive Death in *Salmonella*-Infected Fruit Fly. *PLoS Biol* 2: e418.
49. Vodovar N, Acosta C, Lemaitre B, Boccard F (2004) *Drosophila*: a polyvalent model to decipher host-pathogen interactions. *Trends Microbiol* 12: 235–242.
50. Apidianakis Y, Mindrinos MN, Xiao W, Lau GW, Baldini RL, et al. (2005) Profiling early infection responses: *Pseudomonas aeruginosa* eludes host defenses by suppressing antimicrobial peptide gene expression. *Proc Natl Acad Sci U S A* 102: 2573–2578.
51. Fauvarque MO, Bergeret E, Chabert J, Dacheux D, Satre M, et al. (2002) Role and activation of type III secretion system genes in *Pseudomonas aeruginosa*-induced *Drosophila* killing. *Microb Pathog* 32: 287–295.
52. Sibley CD, Duan KM, Fischer C, Parkins MD, Storey DG, et al. (2008) Discerning the Complexity of Community Interactions Using a *Drosophila* Model of Polymicrobial Infections. *Plos Pathogens* 4(10): e1000184.
53. Elrod-Erickson M, Mishra S, Schneider D (2000) Interactions between the cellular and humoral immune responses in *Drosophila*. *Current Biology* 10: 781–784.
54. Nehme NT, Liegeois S, Kele B, Giammarinaro P, Pradel E, et al. (2007) A model of bacterial intestinal infections in *Drosophila melanogaster*. *PLoS Pathog* 3: e173.
55. Dionne MS, Ghori N, Schneider DS (2003) *Drosophila melanogaster* is a genetically tractable model host for *Mycobacterium marinum*. *Infect Immun* 71: 3540–3550.
56. Tzou P, Meister M, Lemaitre B (2002) Methods for studying infection and immunity in *drosophila*. In: Zychlinsky PSaA *Methods in Microbiology*. London: Academic Press. pp 507–529.
57. Vial L, Déziel E (2008) The fruit fly as a meeting place for microbes. *Cell Host Microbe* 4: 505–507.
58. Simon R, Priefer U, Pühler A (1983) A broad host range mobilization system for *in vivo* genetic engineering: transposon mutagenesis in gram negative bacteria. *Bio/Technology* 1: 784–791.
59. Alexeyev MF (1999) The pKNOCK series of broad-host-range mobilizable suicide vectors for gene knockout and targeted DNA insertion into the chromosome of gram-negative bacteria. *Biotechniques* 26: 824–828.
60. Baldini RL, Lau GW, Rahme LG (2002) Use of plant and insect hosts to model bacterial pathogenesis. *Methods Enzymol* 358: 3–13.
61. Mahenthiralingam E, Coenye T, Chung JW, Speert DP, Govan JR, et al. (2000) Diagnostically and experimentally useful panel of strains from the *Burkholderia cepacia* complex. *J Clin Microbiol* 38: 910–913.
62. Vandamme P, Holmes B, Coenye T, Goris J, Mahenthiralingam E, et al. (2003) *Burkholderia cenocepacia* sp. nov.-a new twist to an old story. *Res Microbiol* 154: 91–96.
63. Nelson MJ, Montgomery SO, Mahaffey WR, Pritchard PH (1987) Biodegradation of trichloroethylene and involvement of an aromatic biodegradative pathway. *Appl Environ Microbiol* 53: 949–954.
64. Coenye T, Vandamme P, LiPuma JJ, Govan JR, Mahenthiralingam E (2003) Updated version of the *Burkholderia cepacia* complex experimental strain panel. *J Clin Microbiol* 41: 2797–2798.
65. Vial L, Lépine F, Milot S, Groleau MC, Dekimpe V, et al. (2008) *Burkholderia pseudomallei*, *B. thailandensis*, and *B. ambifaria* produce 4-hydroxy-2-alkylquinoline analogues with a methyl group at the 3 position that is required for quorum-sensing regulation. *J Bacteriol* 190: 5339–5352.
66. Coenye T, Mahenthiralingam E, Henry D, LiPuma JJ, Laevens S, et al. (2001) *Burkholderia ambifaria* sp. nov., a novel member of the *Burkholderia cepacia* complex including biocontrol and cystic fibrosis-related isolates. *Int J Syst Evol Microbiol* 51: 1481–1490.