

Antifungal indole and pyrrolidine-2,4-Dione derivative peptidomimetic lead design based on in silico study of bioactive Peptide families.

Shoeib Moradi, Parisa Azerang, Vahid Khalaj, Soroush Sardari

► **To cite this version:**

Shoeib Moradi, Parisa Azerang, Vahid Khalaj, Soroush Sardari. Antifungal indole and pyrrolidine-2,4-Dione derivative peptidomimetic lead design based on in silico study of bioactive Peptide families.. Avicenna Journal of Medical Biotechnology, Avicenna Research Institute, 2013, 5 (1), pp.42-53. pasteur-00821604

HAL Id: pasteur-00821604

<https://hal-riip.archives-ouvertes.fr/pasteur-00821604>

Submitted on 11 May 2013

HAL is a multi-disciplinary open access archive for the deposit and dissemination of scientific research documents, whether they are published or not. The documents may come from teaching and research institutions in France or abroad, or from public or private research centers.

L'archive ouverte pluridisciplinaire **HAL**, est destinée au dépôt et à la diffusion de documents scientifiques de niveau recherche, publiés ou non, émanant des établissements d'enseignement et de recherche français ou étrangers, des laboratoires publics ou privés.

Antifungal Indole and Pyrrolidine-2,4-Dione Derivative Peptidomimetic Lead Design Based on *In Silico* Study of Bioactive Peptide Families

Shoeb Moradi¹, Parisa Azerang¹, Vahid Khalaj², and Soroush Sardari^{1*}

1. Drug Design and Bioinformatics Unit, Medical Biotechnology Department, Biotechnology Research Center, Pasteur Institute of Iran, Tehran, Iran

2. Fungal Biotechnology Group, Medical Biotechnology Department, Biotechnology Research Center, Pasteur Institute of Iran, Tehran, Iran

Abstract

Background: The rise of opportunistic fungal infections highlights the need for development of new antimicrobial agents. Antimicrobial Peptides (AMPs) and Antifungal Peptides (AFPs) are among the agents with minimal resistance being developed against them, therefore they can be used as structural templates for design of new antimicrobial agents.

Methods: In the present study four antifungal peptidomimetic structures named C₁ to C₄ were designed based on plant defensin of *Pisum sativum*. Minimum inhibitory concentrations (MICs) for these structures were determined against *Aspergillus niger* N402, *Candida albicans* ATCC 10231, and *Saccharomyces cerevisiae* PTCC 5052.

Results: C₁ and C₂ showed more potent antifungal activity against these fungal strains compared to C₃ and C₄. The structure C₂ demonstrated a potent antifungal activity among them and could be used as a template for future study on antifungal peptidomimetics design. Sequence alignments led to identifying antifungal decapeptide (KTCENLADTY) named KTC-Y, which its MIC was determined on fungal protoplast showing 25 ($\mu\text{g/ml}$) against *Aspergillus fumigatus* Af293.

Conclusion: The present approach to reach the antifungal molecules seems to be a powerful approach in design of bioactive agents based on AMP mimetic identification

Avicenna J Med Biotech 2013; 5(1): 42-53

Keywords: Antifungal agents, Defensins, Drug design, Peptidomimetics, Protoplasts

Introduction

In the past 10 years, the incidence of fungal infections has increased obviously¹. The emerging multiple-drug resistance has led to induce research for the detection of novel drugs through various mechanisms. AMPs and AFPs are evolutionarily preserved modules of the innate immune response and are established along the entire classes of life². These peptides are effective, broad spectrum antibiotics which reveal potential as

new therapeutic agents³. These AMPs are distributed in various sources ranging from primary eukaryotes to mammals containing normally less than 60 amino acids long, having cationic amino acid residues and an amphiphilic structure bound to the membrane (α -helical and/or β -sheet)^{4,5}. The application of these antifungal peptides as drugs is not easy due to their poor oral and tissue absorption, rapid proteolytic cleavage and weak

* **Corresponding author:**
Soroush Sardari, Ph.D., Drug Design and Bioinformatics Unit, Medical Biotechnology Department, Biotechnology Research Center, Pasteur Institute of Iran, Tehran, Iran
Tel: +98 21 66480780
Fax: +98 21 66953311
E-mail: sardari@pasteur.ac.ir
Received: 19 May 2012
Accepted: 22 Aug 2012

half-life or stability. Since the majority of proteins and small peptides are simply proteolyzed, quickly excreted and poorly bioavailable, attempts have been made to determine the ways of replacing peptide portions. These structures are termed as peptidomimetics which are to mimic peptides in the anticipation of attaining more bioavailable units⁶. Their artificial backbone is resistant to proteases as well. Peptidomimetics are one set of probes utilized in the shift pathway of tiny molecule drug design.

Recently, significant progress has been made in the use of Computer-Aided Molecular Design (CAMD) of novel molecules with desired properties. These methods typically rely on two stages: the first stage is forward modelling⁷, through which Quantitative Structure Activity Relationship (QSAR) process is accomplished by application of non-linear modelling procedures such as Artificial Neural Networks (ANN). As example of this strategy, in our group⁸, over 100 antifungal peptides were analyzed by artificial neural networks and observed that most important physicochemical parameters affecting bioactivity of antifungal peptides are Log P and relative amphipaticity.

In the present study, 4 antifungal peptidomimetics structures were designed based on antifungal peptide structures, using bioinformatics and peptidomimetics strategy. The designed compounds were prepared and tested for antimicrobial activity.

Materials and Methods

Data collection

For this study, more than 60 antifungal peptides were selected. Their amino acids sequences were used as input data for sequences alignments in order to find out the shared amino acids sequences among them.

Sequences alignments

T-Coffee v5.13, 2007, and ClustalW (1.82) multiple sequence alignment European Bioinformatics Institute⁵³ were used for sequences alignments of antifungal peptides. T-Coffee is a multiple sequence alignment package⁵⁴.

Given a set of sequences (Proteins or DNA), T-Coffee generates a multiple sequence alignment. After sequence alignment, some correlations between certain sequences were found, which have been repeated in all of antifungal peptides in each group. AFPs with more sequence homology were selected to extract final pattern among them using CLUSTALW alignment. Peptidomimetic structures were designed based on the final pattern obtained from final sequence alignment using T-coffee in which scores are based on colours; positions that have no consistency with the in-house peptide library are in blue, a little in green, better positions in yellow, then orange, and finally red. Yellow to red positions are expected to be entirely correct.

Similarity search was done to find close amino acid sequences to final pattern from sequences alignments in order to find crystallography structures. In the case of our study, T-coffee sequence alignments showed scores between average and good by having dark orange to red colours. The Basic Local Alignment Search Tool (BLAST)⁵⁵, and RCSB Protein Data Bank⁵⁶ were used to achieve this goal.

Mimetic design

In order to design mimetic counterparts, SuperMimic software^{57,58} was used. This tool is being used for finding potential non-peptidic building blocks that can replace or mimic parts of a protein, or peptide and conversely for identifying locations within a protein where such building blocks can be inserted. It identifies compounds that mimic parts of a protein, or positions in proteins that are suitable for inserting mimetics. SuperMimic provides a library of 126 peptidomimetic structures which have been arranged in sublibraries such as beta-turn- or gamma-turn-mimetics⁵⁹. SuperMimic program ©2006 was used to replace KTC-Y with peptidomimetics structures which are in SuperMimic library.

Peptide and mimetic preparation

The decapeptide KTC-Y (KTCENLADTY) was synthesized and purchased from SBS biocompany, Beijing, China. Compounds C₁

and C₂ were purchased from Sigma Aldrich, Eteinhim, Germany, and C₃ and C₄ purchased from Enamine chemical supplier company.

Protoplast preparation

Protoplasts were prepared according to the protocol described by Osheroov and Romano⁵⁷ with some modifications. Briefly, 20 ml of Sabouraud dextrose broth medium was inoculated with 10⁹/ml fresh spores of *Aspergillus niger* (*A. niger*) N402 or *Aspergillus fumigatus* (*A. fumigatus*) Af293 and incubated for 6-7 hr in a shaker incubator, 32°C, 250 rpm until more than 70% of conidia formed germ tube. Germinated spores were then harvested and resuspended in a lytic enzyme mix (5% Glucanex in 0.6 M KCl, 0.05 Citric acid pH=5.8, 1% glucose) and incubated for 2 hr at 30°C, 100 rpm. Resulting protoplasts were harvested by centrifugation for 5 min at 2000 rpm in a bench top centrifuge. Protoplasts were washed twice in 20 ml 0.6 M KCl and resuspended in 1 ml of RPMI 1640 medium, prepared without bicarbonate, buffered with 0.165 M 3-(N-morpholino) propanesulfonic acid (MOPS), and adjusted to pH=7.0 with 10 M NaOH. This medium also contained 2% glucose and 1.2 M sorbitol as an osmotic stabilizer. Antifungal peptide was obtained in powder form and a stock solution of 5 mg/ml in water was prepared. MIC level was determined in 96-well microtiter plates through preparation of twofold serial dilutions across the concentration range (0-200 µg/ml) of antifungal peptide in the above medium. Total volume of each well was 100 µl containing 10⁴ fungal cells. The plate was covered and incubated at 37°C for 24-48 hr. The MIC values were obtained by reading the concentration of the well with no growth.

Antifungal screening

A. niger N402, *Candida albicans* ATCC 10231 and *Saccharomyces cerevisiae* PTCC 5052 were used as test strains. The compounds were dissolved in Dimethyl Sulfoxide (DMSO) to reach a concentration of 10 mg/ml. The broth microdilution method was performed for antifungal activity tests. The absorbance was read at 530 nm for fungi inoculums

to reach the suitable density of microorganisms, equal to 10³ fungi in each well of 96-well microplate after the final dilutions. Working fungal culture was prepared from the stock fungal culture, a 1:1000 dilution with broth (e.g. 10 µl stock fungal culture: 10 ml broth). Sabouraud Maltose Broth (SMB) was used as medium.

Modified antimicrobial susceptibility testing based on NCCLS M27-A method was performed^{60,61}. Broth (100 µl) was added to each well of a 96-well plate and then 40 µl of compounds and 60 µl broth were added to well (A), then a solution (100 µl) serially diluted from well (A) by taking 100 µl into (B) was obtained. This two-fold dilution was continued down the plate and 100 µl from the last well (H) was discarded. Then all the wells were filled with 100 µl of working yeast culture. Itraconazole was used as a reference in fungi test. For this experiment the following controls were prepared: wells containing serial dilution of DMSO and itraconazole only. The plate was covered and incubated at 37°C for 24-48 hr. The MIC values were obtained by reading the concentration of the well with no growth.

Results

Sequences alignments

Various sets of sequence alignments were carried out in order to find better homology among antifungal peptide sequences (Table 1). The final peptide pattern which was designed in our study and led to KTC-Y was obtained from 10 antifungal peptides that showed more sequence homology to each other with high score -using T-COFFEE- shown in figure 1. The final sequence alignments pattern was K-CENLA-DTY in which "-" could be any amino acid. Source of the all 10 AFPs which were used for the final sequence alignments and the final pattern obtained from them was originally from plants. Hence, we obtained a pattern close to defensin sequence which is AFP from plant kingdom. This pattern was used in similarity search to find crystallography structures close

Table 1. Antifungal peptides, their amino acids sequences, molecular weight and their sources

Peptide	Molecular weight	Sequence	Source	References
Pleurostrin	6500	VRPYLVAF	Oyster mushroom	(9)
Vulgarinin	7000	KTCENLADTYKGPCFTSGGD	Haricot beans (<i>Phaseolus vulgaris</i>)	(10)
Cicerin	8200	ARCENFADSYRQPPISSQT	Seeds of the chickpea	(11)
Arietin	5600	GVGYKVVVTTTAAADDDVV	Seeds of the chickpea	(11)
P1	7800	RGPQAFYEERLM	Seeds of a <i>Brassica species</i>	(12)
Fa-AMP1	3879	AQCGAQGGGATCPGGLCCSQWGWCGSTPKYCGAGCQSNC	<i>Fagopyrum esculentum</i> Moench	(13)
Fa-AMP2	3906	AQCGAQGGGATCPGGLCCSQWGWCGSTPKYCGAGCQSNCR	<i>Fagopyrum esculentum</i> Moench	(13)
Lunatusin	7200	KTCENLADTFRGPCFATSNC	Lima beans (<i>Phaseolus lunatus</i> L.)	(14)
Dolabellin B2	3873	SHQDCYEALHKCMASHSKPFSCSMKFMCLQQQ	The sea hare <i>Dolabella auricularia</i>	(15)
Pleurotus AFP	1600	DNGEAGRAAR	Mushroom <i>Pleurotus eryngii</i>	(16)
Tu-AMP1	4988	KSCCRNTVARNYCYNVCRIPGTPRPVCAATCDCKLITGTKCPPGYEK	<i>Tulipa gesneriana</i> 1	(17)
Tu-AMP2	5006	KSCCRNTTARNYCYNVCRIPGTPRPVCAATCDCKIITGTKCPPGYEK	<i>Tulipa gesneriana</i> 2	(17)
Ib-AMP1	2200	EWGRRCCGWGPGRRYCVRWC	<i>Impatin balsamina</i>	(18)
Berevin -2	3630	GLLDSLKFAATAGKVLQSLSTASCKLAKTC	Skin of frog	(8)
Ib-AMP4	2350	EWGRRCCGWGPGRRYCVRWC	<i>Impatin balsamina</i>	(18)
Sesquin	7000	KTCENLADTY	Ground beans	(19)
EAFP1	4212	QTCASRCPRPCNAGLCCSIYGYCGSGNAYCGAGNCRQCRCG	Olive	(20)
EAFP2	4169	QTCASRCPRPCNAGLCCSIYGYCGSGAAAYCGAGNCRQCRCG	<i>Eucommia ulmoides</i> Oliv	(20)
Cucurmoschin	8000	PQRGEGGRAGNLLREEQEI	Black pumpkin seeds	(21)
CW-3	7150	PEDPQRRYQEEQRRE	<i>Malva parviflora</i> seeds	(22)
CW-4	5000	DRQIDMEEQLEKLNKQDRPGLRYAAKQQMTRMG	<i>Malva parviflora</i> seeds	(22)
CW-5	7300	ITCGQVTSQVAGCLSYLQGGAPAPGIRNLMA	<i>Malva parviflora</i> seeds	(22)
Coccinin	6700	KQTENLADTY	Runner beans	(23)
Agrocybin	9000	ANDPQCLYGNVAAKF	Mushroom <i>Agrocybe cylindracea</i>	(24)
AC-AMP	3520	GECVRGRCPSPGMCCSQFYCYCGKCGKPKYCGR	<i>Aarnthus caudatus</i>	(8)
Pn-AMP1	43000	QQCGRQASGRLCGNRLCCSQWGYCGSTASYCGAGCQSQCRC	Seed of <i>Pharbitis nil</i> L.	(25)
Pn-AMP2	43570	QQCGRQASGRLCGNRLCCSQWGYCGSTASYCGAGCQSQCRC	Seed of <i>Pharbitis nil</i> L.	(25)
Lentil AFP	11000	TETNSFSITKFPDGNKLIQFGDGYTTKGGK	Red lentil seeds	(26)
Alveolarin	2800	GVCDMADLA	Mushroom <i>Polyporus alveolaris</i>	(27)
Lentin	2750	CQRAFNNPRDDAIRW	Shitake mushroom	(28)
Lyophyllin	8950	ITFQASPARQTVITNAITRARADVRAAVSALPTKAPVST	<i>Lyophyllum shimeji</i>	(29)
IWF6	4070	RPRPRPCIRAGGYCNILNVCCAGLTCKKHDIQDAACV	Sugar beet leaves	(8)
LAP	7600	AGTEIVTCYNAGTKVPRGSPAGGAIDFFN	Fruiting bodies of <i>L. shimeji</i>	(29)
Psc-AFP	6700	EPILDVNGGSSYYMVPRIWA	<i>Psoralea corylifolia</i> seeds	(30)
Red bean	5700	RTCENLANTYRGPCI	Seeds of the red bean	(31)
Pinto bean	5600	KTCENLADTYKGPCFT	Seeds of the pinto bean	(31)
α -Basrubrin	4300	GADFQECMKEHSQKQHQHQG	Ceylon spinach seeds	(32)
PAFP-s	3929	AGCIKNGGRCNASAGPPYCCSSYCFQIAGQSYGVCKNR	Seeds of <i>Phytolacca americana</i>	(33)
SMAP-29	3198	RGLRRLGRKIAHGKVKYVPTVLRHRIA	Sheep leukocytes	(34)
Cicadin	16500	NEYHGFVDKANNENKRKKQQGRDDFVVKPNNFANRRRKKDDYNENY-YDDVDAADV	Dried Juvenile cicadas	(35)
Pe-AFP2	2750	QSERFEQMQGQDFSHDERFLSQAA	Passion fruit <i>Passiflora edulis</i>	(17)
Eryngin	10500	ATRVVYCNRRSGSVVGGDDTVYYEG	Mushroom <i>Pleurotus eryngii</i>	(36)
β -Basrubrin	5900	KIMAKPSKFYEQLRGR	Ceylon spinach seeds	(32)
Psalmotoxin	3300	ACGILHDNCVYVPAQNPCRCGLQLQRYGKCLVQV	Venom of tarantula	(37)
Pe-AFP1	5600	QSERFEQMQGQDFSHDERFLSQAA	<i>Passiflora edulis</i> seeds	(17)
Drosomycin	4840	DCLSGRYKGPCAVWDNETCRRVCKEGRSSGHCSPLKCWCEGC	Drosophila	(38)
Histatin 3	3410	DSHAKRHHGYKRKFHEKHHSRGRKRSNKLYDN	Saliva of humans	(39)

to it. WU-BLAST2 - Protein Database Query, NCBI-BLAST2 - Protein Database Query, FASTA and SSEARCH - Protein Similarity Search, and RCSB Protein Data Bank were used to discover the structures. Interestingly,

a structure with similarity of 90.909% to our final pattern was found which its PDB ID is 1JKZ.

Information about this protein and its structure as indicated in Protein Data Bank (PDB)

Table 1. Antifungal peptides, their amino acids sequences, molecular weight and their sources (Continued)

Peptide	Molecular weight	Sequence	Source	References
GAFP	4180	DPTCSVLGDFKCNPGRCCSKINYCGACYQWRFGFLTPAR	Leaves of <i>Ginkgo biloba</i>	(40)
Tenecin	4730	VTCDILSVEAKGVKLNDAACAAHCLFRGRSGGYCNGKRVCVCRr	Insect defencin peptides	(41)
Triptecin	1430	VRRFPWWPFLRR	Synthetic	(8)
Esculentin-1	5170	GIFSKLGRKKIKNLLISGLKNVGVGMDVVRTGIDIAGCKIKGEC	Skins of frogs	(42)
Melitin	2750	GIGAVLKVLTTGLPALISWIKRKRQQ	<i>Apis mellifera</i>	(43)
MP1	1210	KKVVFVKVFKK	Combinatorial chemistry	(44)
MP6	1320	CNHKVVFKVFKK	Synthetic from MP	(44)
DSP	4510	AVRIGPCDQVCPRIVPERHECCRAHGRSGYAYCSGGMYCN	Leaf beetle	(45)
Gymnin	6500	KTCENLADDY	Yunnan bean	(46)
Halocidin	2530	RHDDLWRVRRPQKPKFVTVWVR	Hemocytes of the tunicate	(47)
Ascalin	9500	YQCGGG	Shallot bulbs	(48)
<i>Pisum sativum</i>	1500	AKKKKTEEN	<i>Pisum sativum</i> var. <i>arvense</i> Poir	(49)
Cicerarin	8000	VKSTGRADDDLAVKTKYLPP	Green chickpea	(50)
Ar-AMP	3156	AGECVQGRCPGMSQFQGYCGRGPKYCGR	<i>Amaranthus retroflexus</i> L. seeds	(51)
Actinichinin	2500	GAKRAYDEVEAQN	The gold kiwi fruit	(52)

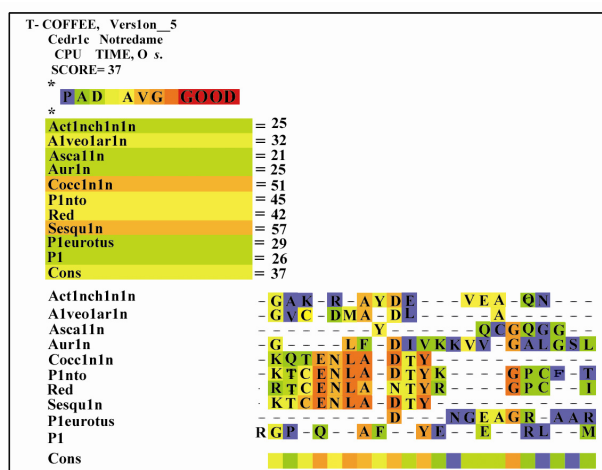


Figure 1. Final sequences alignment among AFPs that led to the selected pattern

included, molecular description DEFENSE-RELATED PEPTIDE 1; classification: antifungal protein; source scientific name: *Pisum sativum*; family: plant defensins. The final peptide pattern obtained from multiple alignment led to the structure that its source was from plant, and belonged to defensins family. Having high sequence identity to 1JKZ, starts from N-terminal part of peptide which is important part of peptide for its antifungal activity.

In this study, it was necessary to input just N-terminal part of crystallized structure of 1JKZ (which contains 10 amino acid sequences with high similarity to final pattern) into SuperMimic program and the other parts

of this structure were not needed. Therefore, it was needed to separate the mentioned area (N-terminal) from the other parts of its structure. Swiss-pdb Viewer⁶² was used to cut N-terminal sequences of our candidate in order to obtain the 3D structure of related segment. This structure named KTC-Y and was used as an input structure in SuperMimic program in order to obtain peptidomimetic structures.

Mimetic design

About 114 peptidomimetics structures were matched to place in KTC-Y using SuperMimic program. Peptidomimetics with lower than 9×10^{-3} Å Root Mean Square Deviation (RMSD) and more similarity to KTC-Y backbone and its side chains were selected. KTC-Y was divided into 2 parts to study and determine potent antifungal region of its structure between its N-terminal and C-terminal. Four peptidomimetics structures were obtained; two structures were designed for its N-terminal part and two structures for its C-terminal part (Figure 2). Two peptidomimetic structures were generated by replacing of the backbone and side chains of N-terminal domain of KTC-Y, named A1 and A2 with RMSD equal to 0.009 and 0.007 Å, respectively. Molecules B₁ and B₂ represent peptidomimetics structures from C-terminal part of KTC-Y that contains amino acids of 5 to 10 and resulting RMSD equal to 0.008 and 0.007 Å,

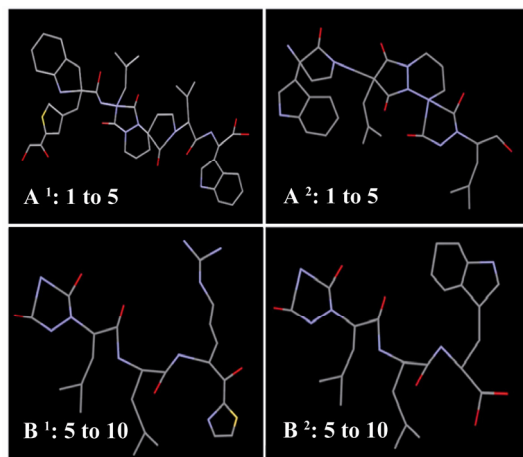


Figure 2. Peptidomimetic structures that designed by SuperMimic Program

respectively. These structures are not small enough to possibly pass through the fungal membrane.

Consequently, similarity search was done to find smaller structures with high similarity to the four peptidomimetics. Using Enhanced NCI Database Browser⁶³, this database also shows summary of data about structures and demonstrates that whether the selected structure has been studied previously or not. This database can also predict activity of structures and can help to estimate the activity of structure against microorganisms. Among all structures that were found, structures that had not been studied before for antifungal activity were selected. ZINC⁶⁴ as a database of commercially-available compounds for virtual screening was applied to uncover these compounds availability through companies for purchase. Finally, four structures were chosen among the resulting molecules for antifungal bioactivity screening (Figure 3).

Protoplast and antifungal screening

Four compounds that were obtained through similarity search (Figure 3) were screened for their protoplast and antifungal properties. These compounds were tested to identify the level of inhibition and the results are shown in table 2. The general ability of the test was affirmed by including a positive control agent. There was no inhibition by DMSO solvent as a negative control. Among the compounds tested, C₃ and C₄ did not show acceptable anti-

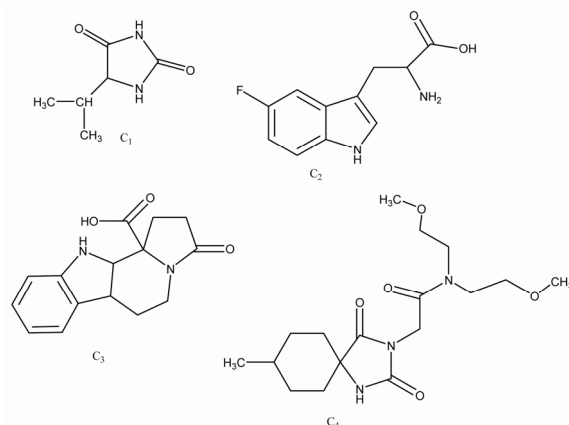


Figure 3. Final compounds for antifungal screening, named C₁, C₂, C₃ and C₄

fungal activities. C₁ and C₂ had more antifungal activities against *A. niger* and *Saccharomyces cerevisiae* (*S. cerevisiae*). Compound C₂ represents the least MIC among the compounds against *A. niger* and *S. cerevisiae*. Compound C₂ is more effective against *A. niger* than *Candida albicans* (*C. albicans*) and shows more antifungal activity on the tested fungal strains than C₁, C₃ and C₄. Due to these results C₂ and C₁ could be an option for future studies and developmental research.

The decapeptide KTC-Y was tested in antifungal bioassay and showed no activity up to 2000 $\mu\text{g/ml}$ in neither of fungal strains assayed; it means that higher concentrations of KTC-Y should be used in order to detect its fungal inhibitory effect or the peptide cannot pass through the cell membrane. To test the second possibility, when KTC-Y was tested against *A. fumigatus* in the protoplast assay, it showed a potent activity, MIC=25 $\mu\text{g/ml}$ (Table 2). The above-mentioned test provides further support for the possibility that KTC-Y peptide is active and it might be the cell wall of *A. fumigatus* that does not allow KTC-Y penetration into its active site on the cell membrane or in the cell itself.

Discussion

An alarming rise in life-threatening systemic fungal infections of varying types and frequencies is seen in immunocompromised patients such as AIDS, cancer and transplant

Table 2. Protoplast assay result of KTC-Y against *A. fumigatus* Af293, and antifungal effect of four mimetic compounds against *A. niger*, *C. albicans*, and *S. cerevisiae*, as obtained by the broth dilution method; MIC values are expressed in $\mu\text{g/ml}$

Microorganisms Compound/Time	<i>C. albicans</i>		<i>S. cerevisiae</i>		<i>A. niger</i>		Protoplast assay [*]
	24 hr	48 hr	24 hr	48 hr	24 hr	48 hr	
KTC-Y	- [*]	-	-	-	>2000	>2000	25
C1	-	1000	-	500	-	250	nt ^{***}
C2	250	500	-	125	-	125	nt
C3	-	1000	-	1000	-	1000	nt
C4	-	1000	-	>1000	-	1000	nt
Itraconazole	0.12	2	-	1	-	8	<0.1

*"-." means no readable growth; ** The test was performed on *A. fumigatus*; *** "nt" means not tested

patients. Invasive medical procedures such as the use of vascular catheters, peritoneal dialysis, haemodialysis and parenteral nutrition have also contributed to the rise in fungal infections. The problem is made worse by the emergence of fungal strains that are resistant to currently used antifungal agents. Therefore, the design of new drugs and further improvement of currently used drugs are essential. The searches for appropriate cellular targets as well as the complete biophysical characterisation of these molecules have begun.

Recent advances in cell and molecular biology, microbiology, biochemistry and recombinant DNA technology have greatly contributed to the characterisation of molecular targets. The modern approach to drug discovery focuses on identifying and describing biochemical targets - mainly proteins - and subsequently matching those targets with small molecules that have the properties needed to inactivate them, *i.e.* structure-based drug design.

Three-dimensional characterisation of antifungal drug targets and understanding the mode of action of antifungal agents are indispensable tools in modern drug research. The success of structure-based drug design demands an iterative procedure⁶⁵. The structure of the protein analyzed in detail allows the design of a ligand that must then be synthesised and tested. Biological data and new protein-ligand complex determination help to refine working hypotheses about complementarity. Repeating these steps leads to incremental improvement in the initial compound.

Proteins achieve their functions by folding into compact, well-ordered structures⁶⁶. Multiple alignments of protein sequences are important in many applications, including phylogenetic tree estimation, secondary structure prediction and critical residue identification⁶⁷. Sequence alignment is a common tool in bioinformatics and comparative genomics⁶⁸. In the current study, investigation for extracting pattern with homology among all AFPs amino acids sequences using ClustalW, BLAST, and T-Coffee led to final pattern with 10 amino acids sequences. AFPs that showed more homology to this pattern belonged to plants. Crystallized structure that belonged to defensins group was obtained from this pattern. Defensins are major AFPs from plant⁶⁹.

Combining these results and information together, and with the help of sequence alignments, we could realize that final pattern are from antifungal peptides originating in plants, and therefore, the crystallized structure extracted similar to KTC-Y structure, belongs to defensins that are most important AFPs in plants. Pleurocidin is a 25-residue peptide which has been studied for its interaction with membrane of human pathogenic fungus *C. albicans*. It was shown that this peptide exerted fungicidal activity against *C. albicans* with the disruption of plasma membrane⁷⁰. Piscidin is another example of cationic peptide which has been investigated for its antifungal activity, being able to permeabilize the model phospholipids membranes⁷¹.

Design of mimetic molecules has been reported previously. For example, Fullbeck *et al*

⁵⁹ used SuperMimic software in order to be able to present folding of the 35-residue subdomain (H35) at its C-terminus of the villin headpiece by irradiation, to replace parts of its main chain without changing the overall structure of the subdomain. Our efforts to design peptidomimetics structures led to finding four compounds through *in silico* analysis. Antifungal assay results indicated that C₂ poses more antifungal activity against selected microorganisms *C. albicans* and *S. cerevisiae*, and *A. niger* rather than the others compounds. The question that we faced was that why this compound is more potent for its antifungal activity or whether this compound acts on lipid bilayer membrane of tested microorganisms.

Looking into this compound's structure, it is realized that this structure consists of tryptophan which could affect its antifungal activity. Therefore, a literature survey was carried out to discover influence of tryptophan on antifungal activity. Tryptophan is generally not an abundant amino acid residue in peptides or proteins. The effect of tryptophan derivative here might be corresponding to its behaviour in AMP in which the partitioning of peptides into membranes is imposed by its propensity to position itself near the membrane/water interface. Examples of antimicrobial peptides exist that are rich in tryptophan include tritrypticin (VRRFPWWPFLRR) and indolicidin (ILPWKWPWPWRR-amide) ⁷². Indolicidin exhibits potent antifungal and antiviral activities that are rich in tryptophan residues ⁷³. Lawyer and his colleagues ⁷⁴, found that a 13 amino acid tryptophan-rich region with the sequence of VRRFPWWPFLRR had strong antimicrobial activity with a wide spectrum.

Tryptophan residues play a crucial role in membrane spanning proteins as well, has a strong preference for the interfacial regions of lipid bilayers. In addition, tryptophan residues are involved in protein folding, forming both native and non-native hydrophobic contacts even in denatured proteins to ensure their proper folding. Further testament to the significance of tryptophan is the fact that upon

screening of a complete combinatorial library of hexapeptides, peptides rich in these two amino acids (W and R) were found to possess the highest antimicrobial activities ⁷⁵.

Ramamoorthy *et al* ⁷⁶, investigated the correlation between cell selectivity and membrane interactions of G15, which is antimicrobial peptide granulysin, and discovered the role of interaction of tryptophan residues and possibly the hydrophobic sidechains with the phosphate head groups for a tight binding of the G15 to the lipid bilayers. They suggested that the tryptophan residue is located at the bilayer interface and not deep inside the hydrophobic region of the membrane. Andreu and colleagues ³¹, during study on cecropins suggested that AMPs containing more tryptophan are being active against microorganisms.

The mimetic design has many applications in biochemical studies for development of new therapies and also pest control ^{78,79}. Recently, some halide substituted indole dihydropyrimidines were synthesized and their antifungal activities have been reported ⁸⁰. Singh and colleague ⁸¹ have isolated an indole alkaloid *Alstonia venenata* named venenatine, which shows antifungal activity against some plant pathogenic and saprophytic fungi.

Conclusion

In this study, we investigated a group of antifungal peptides through bioinformatics investigation that could extract a general pattern to be in common in the N-terminal region. After further analysis, the KTC-Y peptide was chosen to be synthesized. In our preliminary studies, the mentioned decapeptide showed to be active only in protoplast cells, which is an indicator of deep target site for such molecule and role of cell wall as a penetration barrier for this peptide. By computational tools and design of mimetics of and generation similar to mimetics, we were able to reach a group of molecules that are active and can be used for further studies in antifungal drug discovery and design processes. Further experiments on such compounds to determine their mode of

action and synthesis of their derivatives are currently in place in our group.

Acknowledgement

The authors would like to thank Mrs. S. Enayati for her useful technical assistance

References

1. Hong SY, Park TG, Lee KH. The effect of charge increase on the specificity and activity of a short antimicrobial peptide. *Peptides* 2001;22(10):1669-1674.
2. Dhople V, Krukemeyer A, Ramamoorthy A. The human beta-defensin-3, an antibacterial peptide with multiple biological functions. *Biochim Biophys Acta* 2006;1758(9):1499-1512.
3. Brogden KA. Antimicrobial peptides: Pore formers or metabolic inhibitors in bacterial. *Nat Rev Microbiol* 2005;3(3):238-250.
4. Ouellet M, Otis F, Voyer N, Auger M. Biophysical studies of the interactions between 14-mer and 21-mer model amphipathic peptides and membranes. Insights on their modes of action. *Biochim Biophys Acta* 2006;1758(9):1235-1244.
5. Hancock RE. Cationic peptides: effectors in innate immunity and novel antimicrobials. *Lancet Infect Dis* 2001;1(3):156-164.
6. Amsterdam D. Susceptibility testing of antimicrobials in liquid media. In: Lorian V (eds). *Antibiotics in laboratory medicine*. Baltimore Md: Williams and Wilkins; 1996, 52-111.
7. Lopez SF, Kim HS, Choi EC, Delgado M, Granja JR, Khasanov A, et al. Antibacterial agents based on the cyclic D,L-alpha-peptide architecture. *Nature* 2001;412(6845):452-455.
8. Soltani S, Keymanesh K, Sardari S. Evaluation of structural features of membrane acting antifungal peptides by artificial neural networks. *J Biol Sci* 2008;8(5):834-845.
9. Chu KT, Xia L, Ng TB. Pleurostrin, an antifungal peptide from the oyster mushroom. *Peptides* 2005; 26(11):2098-2103.
10. Wong JH, Ng TB. Vulgarinin, a broad-spectrum antifungal peptide from haricot beans (*Phaseolus vulgaris*). *Int J Biochem Cell Biol* 2005;37(8): 1626-1632.
11. Ye XY, Ng TB, Rao PF. Cicerin and arietin, novel chickpea peptides with different antifungal potencies. *Peptides* 2002;23(5):817-822.
12. Lin P, Xia L, Ng TB. First isolation of an antifungal lipid transfer peptide from seeds of a *Brassica* species. *Peptides* 2007;28(8):1514-1519.
13. Fujimura M, Minami Y, Watanabe K, Tadera K. Purification, characterization, and sequencing of a novel type of antimicrobial peptides, Fa-AMP1 and Fa-AMP2, from seeds of buckwheat (*Fagopyrum esculentum* Moench). *Biosci Biotechnol Biochem* 2003;67(8):1636-1642.
14. Wong JH, Ng TB. Lunatusin, a trypsin-stable antimicrobial peptide from lima beans (*Phaseolus lunatus* L.). *Peptides* 2005;26(11):2086-2092.
15. Iijima R, Kisugi J, Yamazaki M. A novel antimicrobial peptide from the sea hare *Dolabella auricularia*. *Dev Comp Immunol* 2003;27(4):305-311.
16. Ng TB. Peptides and proteins from fungi. *Peptides* 2004;25(6):1055-1073.
17. Pelegrini PB, Noronha EF, Muniz MAR, Vasconcelos IM, Chiarello MD, Oliveira JT, et al. An antifungal peptide from passion fruit (*Passiflora edulis*) seeds with similarities to 2S albumin proteins. *Biochim Biophys Acta* 2006;1764(6):1141-1146.
18. Thevissen K, Francois EJA, Sijtsma L, Amerongen A, Schaaper, WMM, Meloen R, et al. Antifungal activity of synthetic peptides derived from *Impatiens balsamina* antimicrobial peptides Ib-AMP1 and Ib-AMP4. *Peptides* 2005;26(7):1113-1119.
19. Wong JH, Ng TB. Sesquin, a potent defensin-like antimicrobial peptide from ground beans with inhibitory activities toward tumor cells and HIV-1 reverse transcriptase. *Peptides* 2005;26(7):1120-1126.
20. Huang RH, Xiang Y, Liu XZ, Zhang Y, Hu Z, Wang DC. Two novel antifungal peptides distinct with a five-disulfide motif from the bark of *Eucommia ulmoides* Oliv. *FEBS Lett* 2002;521(1-3): 87-90.
21. Wang HX, Ng TB. Isolation of cucurmoschin, a novel antifungal peptide abundant in arginine, glutamate and glycine residues from black pumpkin seeds. *Peptides* 2003;24(7):969-972.
22. Wang X, Bunkers GJ, Walters MR, Thoma RS. Purification and characterization of three antifungal proteins from cheeseweed (*Malva parviflora*). *Biochem Biophys Res Commun* 2001;282(5):1224-1228.
23. Ngai PHK, Ng TB. Coccinin, an antifungal peptide with antiproliferative and HIV-1 reverse transcriptase inhibitory activities from large scarlet runner beans. *Peptides* 2004;25(12):2063-2068.
24. Ngai PHK, Zheng Z, Ng TB. Agrocybin, an antifungal peptide from the edible mushroom *Agrocybe cylindracea*. *Peptides* 2005;26(2):191-196.
25. Koo JC, Lee SY, Chun HJ, Cheong YH, Choi JS. Two hevein homologs isolated from the seed of *Pharbitis nil* L. exhibit potent antifungal activity.

- Biochimica et Biophysica Acta 1998;1382(1):80-90.
26. Wang HX, Ng TB. An antifungal peptide from red lentil seeds. *Peptides* 2007;28(3):547-552.
 27. Wang HX, Ng TB, Liu Q. Alveolarin, a novel antifungal polypeptide from the wild mushroom *Polyporus alveolaris*. *Peptides* 2004;25(4):693-696.
 28. Ngai PHK, Ng TB. Lentin, a novel and potent antifungal protein from shitake mushroom with inhibitory effects on activity of human immunodeficiency virus-1 reverse transcriptase and proliferation of leukemia cells. *Life Sci* 2003;73(26):3363-3374.
 29. Lam SK, Ng TB. First simultaneous isolation of a ribosome inactivating protein and an antifungal protein from a mushroom (*Lyophyllum shimeiji*) together with evidence for synergism of their antifungal effect. *Arch Biochem Biophys* 2001;393(2):271-280.
 30. Yang X, Li J, Wang X, Fang W, Bidochka MJ, She R, Xiao Y, et al. Psc-AFP, an antifungal protein with trypsin inhibitor activity from *Psoralea corylifolia* seeds. *Peptides* 2006;27(7):1726-1731.
 31. Ye XY, Ng TB. Peptides from pinto bean and red bean with sequence homology to cowpea 10-kDa protein precursor exhibit antifungal, mitogenic, and HIV-1 reverse transcriptase-inhibitory activities. *Biochem Biophys Res Commun* 2001;285(2):424-429.
 32. Wang H, Ng TB. Novel antifungal peptides from Ceylon spinach seeds. *Biochem Biophys Res Commun* 2001;288(4):765-770.
 33. Gao GH, Liu W, Dai JX, Wang JF, Hu Z, Zhang Y, et al. Solution structure of PAFP-S: a new knottin-type antifungal peptide from the seeds of *Phytolacca americana*. *Biochemistry* 2001;40(37):10973-10978.
 34. Skerlavaj B, Benincasa M, Risso A, Zanetti M, Gennaro R. SMAP-29: a potent antibacterial and antifungal peptide from sheep leukocytes. *FEBS Lett* 1999;463(1-2):58-62.
 35. Wang H, Ng TB. Isolation of cicadin, a novel and potent antifungal peptide from dried juvenile cicadas. *Peptides* 2002;23(1):7-11.
 36. Wang HX, Ng TB. Eryngin, a novel antifungal peptide from fruiting bodies of the edible mushroom *Pleurotus eryngii*. *Peptides* 2004;25(1):1-5.
 37. Lampert A, Noble C, Davies W, Haefner B, Wilson J. Monitor-biology. *Drug Discov Today* 2004;9(22):985-987.
 38. Yang WY, Wen SY, Huang YD, Ye MQ, Deng XJ, Han D, et al. Functional divergence of six isoforms of antifungal peptide Drosomycin in *Drosophila melanogaster*. *Gene* 2006;379:26-32.
 39. Yamagishi H, Fitzgerald DH, Sein T, Walsh TJ, O'Connell BC. Saliva affects the antifungal activity of exogenously added histatin 3 towards *Candida albicans*. *FEMS Microbiol Lett* 2005;244(1):207-212.
 40. Huang X, Xie W, Gong Z. Characteristics and antifungal activity of a chitin binding protein from *Ginkgo biloba*. *FEBS Lett* 2000;478(1):123-126.
 41. Ahn HS, Cho W, Kang SH, Ko SS, Park MS, Cho H, et al. Design and synthesis of novel antimicrobial peptides on the basis of alpha helical domain of Tenecin 1, an insect defensin protein, and structure-activity relationship study. *Peptides* 2006;27(4):640-648.
 42. Simmaco M, Mignogna G, Barra D, Bossa F. Antimicrobial peptides from skin secretions of *Rana esculenta*. *J Biol Chem* 1994;269(16):11956-11961.
 43. De Grado WF, Kezdy FJ, Kaiser ET. Design, synthesis and characterization of a cytotoxic peptide with melittin-like activity. *J Am Chem Soc* 1981;103:679-681.
 44. Oh JE, Hong SY, Lee KH. The comparison of characteristics between membrane-active antifungal peptide and its pseudopeptides. *Bioorg Med Chem* 1999;7(11):2509-2515.
 45. Tanaka H, Suzuki K. Expression profiling of a diapause-specific peptide (DSP) of the leaf beetle *Gastrophysa atrocyanea* and silencing of DSP by double-strand RNA. *J Insect Physiol* 2005;51(6):701-707.
 46. Wong JH, Ng TB. Gymnin, a potent defensin-like antifungal peptide from the Yunnan bean (*Gymnocladus chinensis* Baill). *Peptides* 2003;24(7):963-968.
 47. Jang WS, Kim HK, Lee KY, Kim SA, Han YS, Lee IH. Antifungal activity of synthetic peptide derived from halocidin, antimicrobial peptide from the tunicate, *Halocynthia aurantium*. *FEBS Lett* 2006;580:1490-1496.
 48. Wang HX, Ng TB. Ascalin, a new anti-fungal peptide with human immunodeficiency virus type 1 reverse transcriptase-inhibiting activity from shallot bulbs. *Peptides* 2002;23(6):1025-1029.
 49. Wang HX, Ng TB. An antifungal protein from the pea *Pisum sativum* var. *arvense* Poir. *Peptides* 2006;27(7):1732-1737.
 50. Chu KT, Liu KH, Ng TB. Cicerarin, a novel antifungal peptide from the green chickpea. *Peptides* 2003;24(5):659-663.

51. Lipkin A, Anisimova V, Nikonorova A, Babakov A, Krause E, Bienert M, et al. An antimicrobial peptide Ar-AMP from amaranth (*Amaranthus retroflexus* L.) seeds. *Phytochemistry* 2005;66(20): 2426-2431.
52. Xia L, Ng TB. Actinichinin, a novel antifungal protein from the gold kiwi fruit. *Peptides* 2004;25(7): 1093-1098.
53. EBI: Multiple sequence alignment [Internet]. Cambridge (United Kingdom): European Bioinformatics Institute; c1980. [cited 2012 Nov 6] Available from: <http://www.ebi.ac.uk/>.
54. Notredame C, Higgins DG, Heringa J. T-Coffee: A novel method for fast and accurate multiple sequence alignment. *J Mol Biol* 2000;302(1):205-217.
55. EBI: The Basic Local Alignment Search Tool [Internet]. Cambridge (United Kingdom): European Bioinformatics Institute; c1980. [cited 2012 Nov 6] Available from: <http://blast.ncbi.nlm.nih.gov/Blast.cgi/>.
56. PDB: Protein Data Bank [Internet]. San Diego (CA): San Diego Supercomputer Center (SDSC); 2003. (cited 2012 Nov 6). Available from: <http://www.rcsb.org/pdb/home/home.do/>.
57. Goede A, Michalsky E, Schmidt U, Preissner R. Super mimic-fitting peptide mimetics into protein structures. *BMC Bioinformatics* 2006;7:11.
58. Fullbeck M, Michalsky E, Jaeger IS, Henklein P, Kuhn H, Ruck-Braun K, et al. Design and biological evaluation of photo-switchable inhibitors. *Genome Information* 2006;17(1):141-151.
59. Romano J, Nimrod G, Ben-Tal N, Shadkchan Y, Baruch K, Sharon H, et al. Disruption of the *Aspergillus fumigatus* ECM33 homologue results in rapid conidial germination, antifungal resistance and hypervirulence. *Microbiology* 2006;152(7): 1919-1928.
60. Cuenca-Estrella M, Lee-Yang W, Ciblak MA, Arthington-Skaggs BA, Mellado E, Warnock DW, et al. Comparative evaluation of NCCLS M27-A and EUCAST broth microdilution procedures for antifungal susceptibility testing of candida species. *Antimicrob Agents Chemother* 2002;46(11): 3644-3647.
61. Gomez-Lopez A, Aberkane A, Petrikkou E, Mellado E, Rodriguez-Tudela JL, Cuenca-Estrella M. Analysis of the influence of tween concentration, inoculum size, assay medium, and reading time on susceptibility testing of *Aspergillus* spp. *J Clin Microbiol* 2005;43(3):1251-1255.
62. Swiss-Pdb Viewer [Internet]. Bern (Switzerland): The SIB Swiss Institute of Bioinformatics; 1995-2001. (cited 2012 Nov 6). Available from: <http://www.expasy.ch/spdbv, v3.7 SP5/>.
63. Enhanced NCI Database Browser [Internet]. Nuremberg, Germany: Frederick National Laboratory for Cancer Research (FNLCR). c1997. (cited 2012 Nov 6) Available from: <http://cactus.nci.nih.gov/ncidb2>.
64. ZINC [Internet]. San Francisco (CA): Shoichet Laboratory at University of California San Francisco (UCSF); 2004. (cited 2012 Nov 6). Available from: <http://zinc.docking.org/>.
65. Ruge E, Korting HC, Borelli C. Current state of three-dimensional characterisation of antifungal targets and its use for molecular modelling in drug design. *Int J Antimicrob Agents* 2005;26(6):427-441.
66. Stigers KD, Soth MJ, Nowick JS. Designed molecules that fold to mimic protein secondary structures. *Curr Opin Chem Biol* 1999;3(6):714-723.
67. Edgar RC. MUSCLE: a multiple sequence alignment method with reduced time and space complexity. *BMC Bioinformatics* 2004;5(1):113.
68. Rosenberg MS. Multiple sequence alignment accuracy and evolutionary distance estimation. *BMC Bioinformatics* 2005;6(1):278.
69. Thomma B, Cammue BPA, Thevissen K. Plant defensins. *Planta* 2002;216(2):193-202.
70. Jung HJ, Park YK, Sung WS, Suh BK, Lee J, Hahm KS, et al. Fungicidal effect of pleurocidin by membrane-active mechanism and design of enantiomeric analogue for proteolytic resistance. *Biochim Biophys Acta* 2007;1768(6):1400-1405
71. Sung WS, Lee J, Lee DG. Fungicidal effect of piscidin on *Candida albicans*: pore formation in lipid vesicles and activity in fungal membranes. *Biol Pharm Bull* 2008;31(10):1906-1910.
72. Epanand RM, Vogel HG. Diversity of antimicrobial peptides and their mechanisms of action. *Biochim Biophys Acta* 1999;1462:11-28.
73. Saberwal G, Nagaraj R. Cell-lytic and antibacterial peptides that act by perturbing the barrier function of membranes: facets of their conformational features, structure-function correlations and membrane-perturbing abilities. *Biochim Biophys Acta* 1994;1197(2):109-131.
74. Lawyer C, Pai S, Watabe M, Borgia P, Mashimo T, Eagleton L, et al. Antimicrobial activity of a 13 amino acid tryptophan-rich peptide derived from a putative porcine precursor protein of a novel family of antibacterial peptides. *FEBS Lett* 1996;390(1): 95-98.

75. Chan DI, Prenner EJ, Vogel HJ. Tryptophan- and arginine-rich antimicrobial peptides: Structures and mechanisms of action. *Biochim Biophys Acta* 2006;1758(9):1184-1202.
76. Ramamoorthy A, Thennarasu S, Tan A, Lee DK, Clayberger C, Krensky AM. Cell selectivity correlates with membrane-specific interactions: A case study on the antimicrobial peptide G15 derived from granulysin. *Biochim Biophys Acta* 2006; 1758:154-163.
77. Andreu D, Merrifield RB, Steiner H, Boman HG. N-terminal analogues of cecropin A: synthesis, antibacterial activity, and conformational properties. *Biochemistry* 1985;24(7):1683-1688.
78. Xie Y, Kai ZP, Tobe SS, Deng XL, Ling Y, Wu XQ, et al. Design, synthesis and biological activity of peptidomimetic analogs of insect allatostatins. *Peptides* 2011;32(3):581-586.
79. Deshmukh R, Purohit HJ. Peptide scaffolds: flexible molecular structures with diverse therapeutic potentials. *Int J Pept Res Ther* 2012;18(2):125-143.
80. Heda LC, Sharma R, Pareek C, Chaudhari PB. Synthesis and antimicrobial activity of some derivatives of 5-substituted indole dihydropyrimidines. *E-J Chem* 2009;6(3):770-774.
81. Singh UP, Sarma BK, Mishra PK, Ray AB. Antifungal activity of venenatine, an indole alkaloid isolated from *Alstonia venenata*. *Folia Microbiol (Praha)* 2000;45(2):173-176.