



Molecular mechanisms controlling the phenotype and the EMT/MET dynamics of hepatocyte.

Carla Cicchini, Laura Amicone, Tonino Alonzi, Alessandra Marchetti,
Carmine Mancone, Marco Tripodi

► To cite this version:

Carla Cicchini, Laura Amicone, Tonino Alonzi, Alessandra Marchetti, Carmine Mancone, et al.. Molecular mechanisms controlling the phenotype and the EMT/MET dynamics of hepatocyte.. Liver International, 2014, 35 (2), pp.302-10. 10.1111/liv.12577 . pasteur-01202589

HAL Id: pasteur-01202589

<https://riip.hal.science/pasteur-01202589>

Submitted on 21 Sep 2015

HAL is a multi-disciplinary open access archive for the deposit and dissemination of scientific research documents, whether they are published or not. The documents may come from teaching and research institutions in France or abroad, or from public or private research centers.

L'archive ouverte pluridisciplinaire **HAL**, est destinée au dépôt et à la diffusion de documents scientifiques de niveau recherche, publiés ou non, émanant des établissements d'enseignement et de recherche français ou étrangers, des laboratoires publics ou privés.



Distributed under a Creative Commons Attribution - NonCommercial - NoDerivatives 4.0 International License

REVIEW ARTICLES

Molecular mechanisms controlling the phenotype and the EMT/MET dynamics of hepatocyteCarla Cicchini¹, Laura Amicone¹, Tonino Alonzi², Alessandra Marchetti¹, Carmine Mancone² and Marco Tripodi^{1,2}¹ Istituto Pasteur-Fondazione Cenci Bolognietti, Department of Cellular Biotechnologies and Haematology, Sapienza University of Rome, Rome, Italy² National Institute for Infectious Diseases L. Spallanzani, IRCCS, Rome, Italy**Keywords**

EMT/MET – HNF4a – Snail – Hepatocyte

Correspondence

Marco Tripodi, Dipartimento di Biotecnologie
Cellulari ed Ematologia, Sezione di Genetica
Molecolare, Sapienza University of Rome,
Viale Regina Elena 324, 00161 Rome, Italy
Tel: +39-06-4461387
Fax: +39-06-4462891
e-mail: tripodi@bce.uniroma1.it

Received 6 December 2013

Accepted 19 April 2014

DOI:10.1111/liv.12577

Liver Int. 2015; 35: 302–310

This is an open access article under the terms of the Creative Commons Attribution-Non Commercial-NoDerivs License, which permits use and distribution in any medium, provided the original work is properly cited, the use is non-commercial and no modifications or adaptations are made.

Abstract

The complex spatial and paracrine relationships between the various liver histotypes are essential for proper functioning of the hepatic parenchymal cells. Only within a correct tissue organization, in fact, they stably maintain their identity and differentiated phenotype. The loss of histotype identity, which invariably occurs in the primary hepatocytes in culture, or *in vivo* in particular pathological conditions (fibrosis and tumours), is mainly because of the phenomenon of epithelial-to-mesenchymal transition (EMT). The EMT process, that occurs in the many epithelial cells, appears to be driven by a number of general, non-tissue-specific, master transcriptional regulators. The reverse process, the mesenchymal-to-epithelial transition (MET), as yet much less characterized at a molecular level, restores specific epithelial identities, and thus must include tissue-specific master elements. In this review, we will summarize the so far unveiled events of EMT/MET occurring in liver cells. In particular, we will focus on hepatocyte and describe the pivotal role in the control of EMT/MET dynamics exerted by a tissue-specific molecular mini-circuitry. Recent evidence, indeed, highlighted as two transcriptional factors, the master gene of EMT Snail, and the master gene of hepatocyte differentiation HNF4 α , exerting a direct reciprocal repression, act as pivotal elements in determining opposite cellular outcomes. The different balances between these two master regulators, further integrated by specific micro-RNAs, in fact, were found responsible for the EMT/METs dynamics as well as for the preservation of both hepatocyte and stem/precursor cells identity and differentiation. Overall, these findings impact the maintenance of stem cells and differentiated cells both in *in vivo* EMT/MET physio-pathological processes as well as in culture.

The liver is one of the most complex organs, from both a structural and functional standpoint. The physical interactions between different cell types, arranged in specific spatial relationships, are essential for proper functioning of the parenchyma. This appears evident in primary cultures, where the three-dimensional structure of the organ and the interactions with the other hepatic cell types are lost. Preserving liver cell differentiated phenotype *in vitro*, thus, still represents a challenge which is far from being overcome.

Hepatocytes, the major liver parenchymal cell type, appear to be pivotal, together with the vascular tree, for tissue organization and correct cross-talk between different cell types. The mature hepatocytes, with their arrangement in the liver lobule and paracrine activity, are in fact essential for a correctly organized sinusoidal system and control of the function of biliary cells and hepatic stellate cells (HSCs). Endothelial cells,

cholangiocytes and stellate cells, in turn, are essential for maintaining correct functionality of the hepatocyte. The importance of tissue architecture for correct functioning of the liver is further demonstrated by the phenomenon of liver zonation, in which hepatocytes display a metabolic specialization depending on their localization in the liver lobule. The zonation is related to large modulations of gene expression induced by diffusible factors present in the liver lobule according to concentration gradients along the portal-venular axis (1). Recently, the Wnt pathway has been unveiled as the main molecular signalling of the liver zonation, and cross-talk between its downstream effectors and liver-specific transcriptional factors has been described (2).

In the adult liver, the hepatocyte stable identity is challenged when the cells must undergo changes in response to intrinsic and extrinsic signals, such as those

inducing and driving the response to mitogens during compensatory liver regeneration.

After loss of parenchyma (for surgical resection or injuries caused by drugs, toxins or acute viral diseases), virtually all residual hepatocytes, that in the normal organ are nearly all quiescent, undergo 2–3 cell replications, completely recovering the original liver mass. This liver compensatory regeneration is a rapid and tightly orchestrated phenomenon, efficiently ensuring the reacquisition of original tissue functionality (3). Most importantly, and differently from other cell types, in which the proliferation and terminal differentiation are mutually exclusive activities, in liver regeneration the mature hepatocytes re-enter in cell cycle and proliferate while maintaining the liver vital functions (4, 5). If starting from this evidence it has been concluded that, essentially, proliferating hepatocytes do not lose their differentiated phenotype, a number of observations also suggest as proliferation might imply the modulation of some features towards a prenatal developmental stages; in regenerating liver in fact: (i) the junctional complexes of hepatocytes resemble the embryonic stages (6), (ii) the transcriptional factor C/EBP α (known to peak around birth, to decrease in the immediate neonatal period and to rebound in the adult (7) is down-regulated (8), (iii) subpopulations of hepatocytic cells expressing Fn-14 and other progenitor markers are detectable (9) and as recently reported, (iv) E-cadherin is down-regulated (10). This appears consistent with results obtained in *in vitro* models, where comparative proteomic analysis indicates as the hepatocyte terminal differentiation programme requires a quiescent state maintained by cell–cell contact through the E-cadherin/ β -catenin pathway (11).

Liver cells undergo cellular transitions

The idea that terminal differentiation is permanently maintained, once development is complete, has been challenged by the observations that hepatocytes are highly responsive to stimuli inducing profound cell reprogramming and resulting in a mesenchymal trans-differentiation by the process known as epithelial-to-mesenchymal transition (EMT).

The EMT is a complex phenomenon by which several types of epithelial polarized cells lose cell–cell connections and acquire mesenchymal characteristics of motility and invasiveness (12). Different EMT subtypes can be categorized according to when this process occurs: (i) type 1 concerns developmental and organogenesis events; (ii) type 2 plays a major role in wound healing, regeneration and fibrosis and (iii) type 3 characterizes epithelial tumour progression rendering cancer cells able to metastasize [for review (13)].

Hallmarks for EMT include increased expression of vimentin, nuclear localization of β -catenin and production of transcription factors able to inhibit E-cadherin expression. In particular, master EMT inducers have

been identified in the transcriptional repressors belonging to the Snail family, Snail (Snail1) and Slug (Snai2); these factors are able to determine EMT induction targeting many epithelial genes starting from the direct inhibition of E-cadherin gene transcription (14). The first indication that the Snail gene family had a key role in triggering EMT, by loss-of-function experiments in chick embryos (15), was successively confirmed in several epithelial cell types and other vertebrate embryos (16, 14). It is now widely demonstrated that Snail levels are inversely correlated with E-cadherin in numerous tumours and contribute to the acquisition of an invasive phenotype (14, 16–19).

Many signalling pathways, including transforming growth factor β (TGF β) superfamily, epidermal growth factor (EGF), Wnt, sonic hedgehog (Hh) and Notch, and oncogenic events, such as Src or Ras activation, are implicated in EMT induction, both in physiology and pathology (20, 21). Notably, Snail is the main effector of many of these EMT inducers (22).

In particular, TGF β 1 is considered the master EMT inducer for malignant and non-malignant epithelial cells, including hepatocytes (23). TGF β 1 acts as a potent inducer of EMT combining both Smad-dependent and independent signalling pathways (24, 25). Binding of TGF β 1 with its receptors type I and type II induces Smad2/3 phosphorylation. Phosphorylated Smads recruit Smad4 to translocate into the nucleus and regulate gene expression. The activation of Snail promoter depends on the direct binding of Smad3/Smad4 (26). In turn, a complex between Snail and Smad3/Smad4 represses the epithelial markers E-cadherin and occludin (26). TGF β also promotes EMT through activation of MAPK, Rho GTPases and PI3K (24). Other EMT transcriptional regulators, such as ZEB1, are also regulated by TGF β 1 in a Smad-dependent manner (24, 25). Notably, Snail (27) and ZEB1 (28) are able to repress miR-200 family members, in turn targeting ZEB1 (29), and thus controlling the EMT outcome by a feedback mechanism. Several other microRNAs and some ncRNAs, with their ability to target multiple components involved in epithelial integrity or mesenchymal traits, recently emerged as potent regulators of EMT/MET (30–32).

The EMT reverse transdifferentiation event, the mesenchymal-to-epithelial transition (MET), allows the mesenchymal cells to redifferentiate into epithelial structures. MET occurs in physiological (i.e. in development) and pathological situations (i.e. cancer metastasis), where the migrating mesenchymal-like cells that have reached secondary sites reacquire cell–cell contacts and polarity (33). Notably, an event of MET resulted necessary for the success of experimentally induced cellular reprogramming, where a cocktail of critical transcriptional factors prompts fibroblasts to mimic epithelial-like undifferentiated Embryonic Stem Cells (ESC) (34, 35). Coherently with the fact that MET represents a reversion of EMT, a down-regulation of

EMT-inducing transcription factors such as Snail, Slug, and ZEB1 is invariably associated with MET. As yet MET molecular mechanisms are only partially characterized.

It is conceivable that the MET process may involve a number of histotype-specific elements, as suggested by evidence revealing as the BMPs-dependent signalling can promote MET in a histotype and context-specific manner (24, 35).

The EMT/MET dynamics has also been proposed as a key element of stem cell biology (36). In fact, a common characteristic of embryonic and adult stem cells is the presence of both epithelial and mesenchymal traits that define the 'metastable' stem/precursor phenotype. A fine regulated balance of EMT/MET dynamic allows for stem cell self-renewal while its unbalance in either direction causes generation of precursors that differentiate into epithelial or mesenchymal cell types. The molecular pathways controlling the EMT/MET dynamics of normal stem cells are expected to be similar to that of cancer stem cells, a specific population of metastable tumour cells able to initiate and maintain many types of cancer (37–39). Of note is the theoretical model for molecular mechanisms controlling EMT/MET dynamics based on the miR-34/Snail and the miR-200/Zeb mutual-inhibition feedback circuits (40).

In the liver, several types of cells have been shown to undergo EMT/MET: in particular, hepatocytes, both primary and established in line, when treated with TGF β down-regulate epithelial and hepatic markers (e-cadherin and albumin), while up-regulate mesenchymal genes (vimentin and α -SMA) and acquire motility and invasiveness (41–44). Valdes and colleagues (45) reported that TGF β treatment of primary hepatocytes selects an apoptosis-resistant cell population, which is subjected to an EMT with an increase in Snail and vimentin and negative regulation of E-cadherin, cytokeratin 18 and hepatocyte nuclear factors (HNFs). For most of these TGF β effects, the activation of Focal Adhesion Kinase (FAK) signalling is required. TGF β , in fact, induces a Src-dependent activation of FAK which has been demonstrated to be necessary for (i) transcriptional up-regulation of mesenchymal and invasiveness markers and (ii) delocalization of membrane-bound E-cadherin (46).

Moreover, the EMT process has been related to the dedifferentiation process that invariably occurs in freshly isolated hepatocytes within a few days of culture on a stiff layer of dried collagen. Recently, the mechanism controlling dedifferentiation of hepatocytes in primary cultures, in relation to the specific signalling network triggered by extracellular matrix, has been partially unveiled. In this case, a FAK-mediated AKT activation (promoting a resistance to the TGF β -induced apoptosis) and ERK1/2 signalling activation (opening the route to a TGF β -induced EMT programme) were also observed. Antagonizing Akt and ERK1/2 signalling pathways caused the rescue of functional and

morphological features, thus unveiling a mechanism controlling hepatocyte differentiation (47).

Cholangiocytes also transdifferentiate in mesenchymal-like cells when treated with TGF β (48) or cultured in medium conditioned by myofibroblasts derived from fibrotic livers (49). Regarding HSCs, the liver cell type that most contributes to liver fibrosis, they have been suggested to be transitional cells. As a matter of fact HSC retain precursor features in expressing a number of epithelial and mesenchymal markers and appear able in culture to become myofibroblasts by EMT or hepatocytes with a MET-like process (50).

With respect to the relevance of the EMT/MET phenomena occurring in *in vivo* adult liver, the literature collected evidence both for and against it. Concerning the HSCs, if the idea that these are transitional cells, expressing both mesenchymal and epithelial genes, is accepted (50, 51), their activation into myofibroblasts, largely observed during liver fibrosis, corresponds to an EMT (51, 52). Instead, the possibility of HSCs undergoing MET *in vivo* is most debatable. An elegant work by Yang and collaborators (53), taking advantage of a genetic cell lineage tracing, showed that HSCs, when activated by liver injury or culture, became highly proliferative and started to express mesenchymal and epithelial markers. From these transitional cells, a population of genetically marked hepatocytes, able to repopulate large areas of the hepatic parenchyma, emerged. Consistent with these results is the recent evidence, collected by Conigliaro *et al.* (54), that metastable hepatic stem/progenitor cells, isolated from embryonic livers and established in clonally derived cell lines, give rise to both hepatocytes and HSCs when injected into normal growing liver.

Regarding hepatocytes, the results gathered by Zeisberg *et al.* (55), based on a lineage tracing approach in a murine experimental model of liver fibrosis, suggested that collagen producing cells can also be derived from hepatocytes by EMT and that these types of myofibroblasts contribute significantly to the progression of liver disease. However, Taura *et al.* (56) have followed, by a similar approach of cell fate mapping, the outcome of albumin expressing cells in injured liver, without identifying hepatocyte-derived fibroblasts.

The Fig. 1 summarizes in a schematic representation the physio-pathological EMT/MET dynamics of liver cells.

EMT in hepatocytes implies down-regulation of hepatic master gene HNF4 α

The EMT in hepatocytes correlates with the down-regulation of the hepatic differentiation key factors HNFs (hepatocyte nuclear factors), particularly HNF4 α .

Cicchini and colleagues demonstrated, indeed, that the TGF β treatment of well-differentiated, non-tumorigenic, hepatocytic cell lines (57) induces a full EMT, underlined by Snail induction and E-cadherin, HNF1

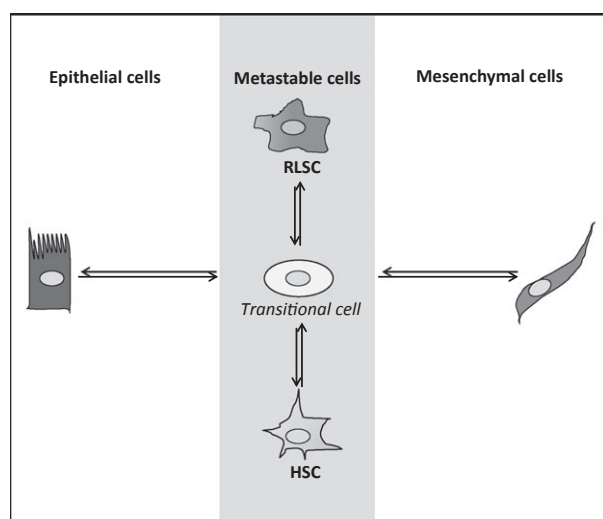


Fig. 1. Schematic representation of physio-pathological EMT/MET dynamics of liver cells. Cells coexpressing epithelial/mesenchymal markers are here termed 'metastable'.

and HNF4 α (43) down-regulation. Snail appears to be at the cross-road of epithelial morphogenesis and differentiation of hepatocyte. Snail overexpression, in fact, appeared sufficient (i) to induce EMT in hepatocytes (with conversion of morphology, down-regulation of several epithelial adhesion molecules, reduction of proliferation and induction of matrix metalloproteinase two expression) and, most relevantly, (ii) to directly repress the transcription of the HNF4 α gene (43).

The liver-enriched transcriptional factor (LEFT) HNF4 α is a well-known master of both liver morphogenesis and hepatocyte differentiation. During embryonic development, a highly regulated network among a number of LEFTs drives the differentiation process of the endodermal stem cell in differentiated parenchymal cells (58): HNF4 α 1, HNF1 β , FoxA2, HNF6 and LRH-1 are key factors in this circuitry by acting as positive regulators of each other's and of a repertoire of hepatic target genes. In particular, HNF1 β , FoxA2 and HNF6 have roles in controlling the onset of the hepatic gene expression during specification of the liver progenitors, while HNF4 α , although not having an impact on hepatic specification, is essential for subsequent differentiation of hepatic progenitors. During midgestation, HNF4 α drives hepatocyte differentiation controlling the acquisition of an epithelial phenotype (59). This implies the activation of the expression of cell adhesion and junction molecules that in turn convert non-polarized cells in organized sheets of closely associated polarized epithelial cells.

Concerning liver morphogenesis, when HNF4 α is specifically removed from foetal hepatoblasts, hepatic architecture is severely affected, with livers exhibiting loss of endothelial cells and disrupted hepatocellular polarity (60). In adult hepatocytes, HNF4 α continues to

have an important role in maintaining hepatocyte functions (61, 62) and proliferative quiescence (63). This is confirmed by genome-wide ChIP studies in which HNF4 α was found to occupy 12% of genes in human adult hepatocytes (64).

Notably, an inverse correlation between HNF4 α and the EMT master factor Snail was demonstrated during hepatocyte differentiation (65) and hepatocellular carcinoma (HCC) progression. Snail expression, in fact, significantly increases along with HCC dedifferentiation, accelerating cancer invasion (66). Moreover, EMT and E-cadherin down-regulation have been shown to play an important role in HCC progression (67). On the other hand, the loss of HNF4 α expression is determinant for HCC progression and its forced re-expression is able to promote the highly invasive undifferentiated tumour reversion towards a more differentiated epithelium and the reacquisition of cell-ECM contacts (68). Moreover, HCC cells expressing HNF4 α also re-established expression of the profile of liver transcription factors and hepatic genes that are associated with a differentiated hepatocyte phenotype. Notably, HNF4 α overexpressing hepatoma cells are deficient for Snail, expressed instead in the parental population (69).

All this evidence suggests that Snail could contribute to liver tumour progression through the down-regulation of HNF4 α . This is in agreement with other observations that dedifferentiated hepatoma cell lines constitutively express Snail, while well-differentiated rat hepatoma cells are deficient for Snail (43).

HNF4 α acts as a met master factor

Various evidences demonstrated a role for HNF4 α as a dominant regulator of the epithelial phenotype. Indeed, HNF4 α not only regulates the developmental expression of adhesion molecules (60) but also when ectopically expressed in different cells, such as fibroblast (59) and F9 cells (70), it is sufficient to trigger tight-junction and epithelial polarity molecules expression inducing a MET.

Interestingly, HNF4 α expression in dedifferentiated hepatoma is sufficient to re-establish the hepatocyte markers gene expression and epithelial cell morphology and polarity (69). Moreover, in HCC the forced expression of HNF4 α induces reversion of highly invasive tumours towards a less invasive phenotype (68).

Notably, enforced expression of HNF4 α , plus Foxa1, Foxa2 or Foxa3, directly reprograms mouse fibroblasts into induced hepatocyte-like (iHep) cells (71).

HNF4 α controls hepatocyte epitheliality by active repression of the mesenchymal programme

As mentioned above, the main HNF4 α characterized function was the positive modulation of tissue-specific epithelial and hepatocyte gene expression, sufficient for the acquisition of an epithelial differentiated phenotype.

Moreover, a new mechanism was recently unveiled by which HNF4 α , inducing MET maintains the hepatocyte-differentiated phenotype. Santangelo and colleagues (72), indeed, demonstrated a novel HNF4 α 'anti-mesenchymal' role through the orchestrated repression of both master EMT regulators and mesenchymal genes. These authors provided evidence of repression of the mesenchymal programme, both during the HNF4 α -mediated MET process of undifferentiated hepatoma or fibroblast cells, and in the normal fully differentiated hepatocytes that stably retain the epithelial phenotype. In particular, in dedifferentiated hepatoma, forced expression of HNF4 α appeared sufficient to down-regulate mesenchymal markers such as Snail, Slug, HMGA2, vimentin and fibronectin expression. In terminally differentiated hepatocytes, endogenous HNF4 α was found stably recruited to the promoters of these EMT inducers and mesenchymal genes. Using both cell cultures and liver-specific HNF4 α knockout mouse models, a direct correlation between loss of HNF4 α and up-regulation of the mesenchymal genes has been demonstrated. Histological examination of liver sections from Alb-HNF4 α $-/-$ mice demonstrated that hepatocytes, with the known hypertrophic phenotype, express vimentin, desmin, fibronectin and α -smooth muscle actin (with no increase in non-parenchymal cells) (61,72).

These data integrate the well-established notion of the pivotal positive role of HNF4 α in hepatocyte differentiation through expression of epithelial genes with the new concept of an active and fundamental role of HNF4 α in the repression of the hepatocyte mesenchymal programme.

The capacity of HNF4 α -depleted hepatocyte to acquire a mesenchymal phenotype is intriguing and deserves future investigations on HNF4 α KO models, especially in the light of the reports suggesting that quiescent HSC might be transitional cells derived from the partial EMT of epithelial cells (73). The evidence reported by Santangelo and colleagues (72), together with the previous demonstration that Snail directly represses HNF4 α (43), allows for the formulation of a simple cross-regulatory model between Snail and HNF4 α : the expression of each factor is mutually exclusive to the other, and this is because of the presence of repressor elements in each promoter. This HNF4 α /Snail circuit of reciprocal regulation between two master regulators provides a simple molecular mechanism for EMT/MET feedback and reversible differentiation processes in both physiology and pathology.

Notably, the same authors extended the 'anti-mesenchymal' role of HNF4 α , by direct transcriptional regulation of EMT master genes and mesenchymal markers, the other hepatocyte-enriched transcriptional factor HNF1 α (72), known to play an important role in hepatocyte differentiation and function (64) and to be positively regulated by HNF4 α . Successively, also Pelletier and colleagues, providing evidence that HNF1 α inhibi-

tion triggers EMT in human liver cell lines, concluded that HNF1 α has a role in the maintenance of hepatocyte epithelial identity (74). Moreover, was reported to be one of the few factors which ectopic expression in embryonic fibroblasts (MEFs) appears sufficient to generate induced hepatocyte-like (iHep) cells (75).

Thus, both HNF4 α and HNF1 α transcriptional repression of critical mesenchymal genes is pivotal, not only for the regulation of the dynamic process of MET but also for the maintenance of a stable epithelial phenotype.

SNAIL/HNF4 α circuit also plays a pivotal role in liver stem cell maintenance

Several recent studies showed how the induction of EMT in differentiated epithelial cells corresponds to the execution of a stemness programme. In particular, an important work of Mani and collaborators showed that treatment with TGF β of immortalized cells of mammary epithelium, as well as ectopic expression of two master genes of the EMT, Twist or Snail, induces, together with a mesenchymal phenotype, the expression of stem cell markers and the ability to form mammospheres, as mammary epithelial stem cells do (76). Similarly, the treatment of tumoural mammary epithelial cells, allows for the acquisition of a cancer stem cell behaviour, such as the formation of mammospheres, the capacity to form colonies on soft-agar and increased efficiency of tumour formation. Also Morel *et al.* (77), using a mammary tumour progression model, showed that the acquisition of stem and tumorigenic characteristics of cancer stem cells are driven by EMT induction.

Moreover, the coexpression of epithelial and mesenchymal markers in the epithelial stem cells characterized so far, suggests that the maintenance of a partial mesenchymal programme could be necessary for stemness behaviour.

In line with this observation is the finding that Snail is expressed in hepatic stem/precursor cells resident in the murine livers and that this expression correlates with the expression of stemness markers (27). This unexpected finding, considering that the transcriptional repression is the only function so far attributed to Snail, allowed for identifying other factors integrating/mediating Snail activity. In particular, it has been shown that in liver stem/precursor cells, Snail inhibits the hepatocyte-specific programme through direct repression of the HNF4 α gene and the epithelial microRNAs (miR)-200c and 34a, known as stemness-inhibiting microRNAs for their targeting of stemness genes, while in the hepatocytes, HNF4 α , together with a direct repression of Snail gene, directly up-regulates miR-200 family members (200a, b and c) and miR-34a transcription, thus further stabilizing the hepatocytic phenotype. Altogether, these data unveiled Snail, HNF4 α and miRNAs as elements controlling hepatic stem cell maintenance/differentiation, acting in a simple and direct molecular mini-cir-

cuitry in which master elements reciprocally repress their own expression while inversely controlling the expression of specific microRNAs.

HNF4 α as a gene therapy tool for HCC

As mentioned above, the emergence of mesenchymal traits characterizes cells metastasizing from carcinomas and during HCC progression, an inverse regulation between Snail and HNF4 α is observed with Snail expression directly correlating with the dedifferentiation grade of HCC, cancer invasion and poor prognosis (66). In a comparable way, HNF4 α expression, lost in more aggressive HCC, if restored, promotes reversion towards a less invasive phenotype, both repressing EMT programme and promoting hepatocyte differentiation (69, 78). Therefore, the restoration of the functions HNF4 α in HCC invasive represents an important milestone for the anticancer therapies. However, recent data have shown that in an environment containing TGF β , HNF4 α restoration usually fails to counteract tumour progression. The tumour promotion effects of TGF β , indeed, result dominant on HNF4 α activity, thus limiting the HNF4 α gene transfer as a therapeutic approach of HCC.

The molecular basis of this dominance resides on some post-translational modifications, induced by the TGF β signalling on HNF4 α protein, that provoke the displacement of transcriptional factor from its target gene promoters, including Snail. GSK3 β kinase has been individuated as one of the TGF β targets mediating HNF4 α functional inactivation; GSK3 β chemical inhibition, in fact, resulted in the HNF4 α DNA binding impairment, while a constitutively active GSK3 β mutant impairs the TGF β -induced inhibitory effect on HNF4 α tumour suppressor activity (79).

Conclusions and perspectives

The balance between Snail (EMT master gene) and HNF4 α (MET master gene) in liver stem cells and liver cancer cells (cancer stem cells or transformed hepatocytes) ultimately influences the outcome of the transition between the mesenchymal/undifferentiated and the epithelial/differentiated phenotype. This simple and direct molecular mini-circuitry of master elements (Fig. 2), able to reciprocally repress their own expression may theoretically provide the best device to trigger complex phenomena such as stemness and differentiation. However, this necessarily implies that these master factors act in much more complex macromolecular systems, able to direct and modulate a whole transcriptional profile, influencing the early stages of gene expression.

Further studies are necessary to shed light on the complexity of the cellular output of the proposed mini-circuitry, based on the conceivable hypothesis that a transcriptional master gene acts by organizing a molecu-

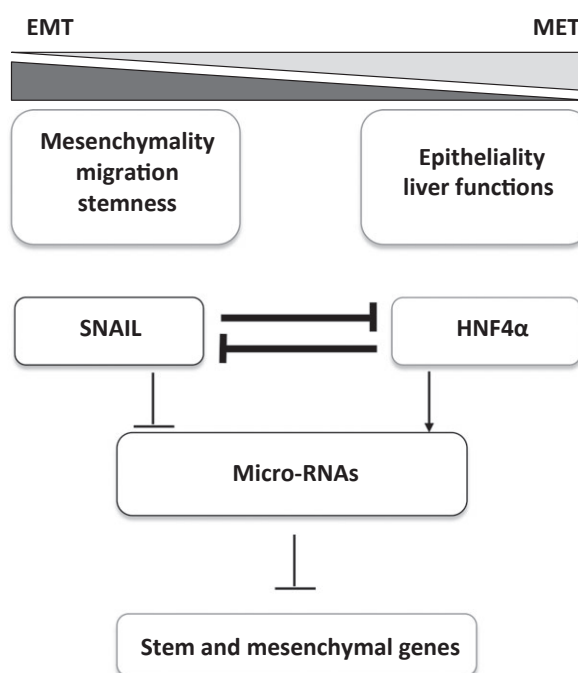


Fig. 2. Molecular circuitry controlling EMT/MET liver cell dynamics. The balance between Snail and HNF4 α , based on their mutual negative regulation, controls epitheliality, mesenchymality and stemness of liver cells. A number of microRNAs were found to amplify the biological impacts of the circuitry.

lar platform that in turn is capable of driving a coherent cellular response which involves hundreds of target genes. In other terms, both the EMT/stemness master regulator Snail and the MET/hepatocyte differentiation master regulator HNF4 α could behave as reprogramming transcriptional factors, triggering the necessary epigenetic changes on regulative regions of their own target genes. As 'master' regulators of stem cell fate and/or the reprogramming of a differentiated cell, they could directly recruit general chromatin modifiers to their target genes, regulating their transcriptional competency.

Moreover, we believe that the hierarchical relevance of these master regulatory molecules, controlling a broad range of cellular functions, may allow for designing simple molecular therapies based on a gene transfer approach. The epistatic relation among Snail/HNF4 α , a number of miRNAs and their target genes, is further influenced by environmental cues such as TGF β .

In this context, the use of engineered molecular tools, insensitive to negative regulation by the microenvironment, will represent the successful approach to improve gene therapy strategies.

Although promising in *in vitro* and preclinical studies, this strategy, when applied clinically, should take into account the tumour niche influence, which is capable of exerting direct functional impairment of therapeutic molecules.

Acknowledgement

Conflict of interest: The authors do not have any disclosures to report.

References

- Torre C, Perret C, Colnot S. Molecular determinants of liver zonation. *Prog Mol Biol Transl Sci* 2010; **97**: 127–50.
- Colletti M, Cicchini C, Conigliaro A, et al. Convergence of Wnt signaling on the HNF4alpha-driven transcription in controlling liver zonation. *Gastroenterology* 2009; **137**: 660–72.
- Fausto N. Liver regeneration. *J Hepatol* 2000; **32**(Suppl. 1): 19–31.
- Michalopoulos Gk. Liver regeneration: alternative epithelial pathways. *Int J Biochem Cell Biol* 2011; **43**: 173–9.
- Greenbaum LE, Cressman DE, Haber BA, Taub R. Coexistence of C/EBP alpha, beta, growth-induced proteins and DNA synthesis in hepatocytes during liver regeneration. Implications for maintenance of the differentiated state during liver growth. *J Clin Invest* 1995; **96**: 1351–65.
- Treyer A, Musch A. Hepatocyte polarity. *Comprehensive Physiol* 2013; **3**: 243–87.
- Darlington GJ, Wang N, Hanson RW. C/EBP alpha: a critical regulator of genes governing integrative metabolic processes. *Curr Opin Genet Dev* 1995; **5**: 565–70.
- Flodby P, Antonson P, Barlow C, et al. Differential patterns of expression of three C/EBP isoforms, HNF-1, and HNF-4 after partial hepatectomy in rats. *Exp Cell Res* 1993; **208**: 248–56.
- Karaca G, Swiderska-Syn M, Xie G, et al. TWEAK/Fn14 signaling is required for liver regeneration after partial hepatectomy in mice. *PLoS ONE* 2014; **9**: e83987.
- Zhang H, Dong LY, Sun G, An W. Downregulation of hepatic stimulator substance during the early phase of liver regeneration inhibits E-cadherin expression in mice. *Int J Biochem Cell Biol* 2014; **47**: 38–46.
- Mancone C, Conti B, Amicone L, et al. Proteomic analysis reveals a major role for contact inhibition in the terminal differentiation of hepatocytes. *J Hepatol* 2010; **52**: 234–43.
- Nieto MA. The snail superfamily of zinc-finger transcription factors. *Nat Rev Mol Cell Biol* 2002; **3**: 155–66.
- Acloque H, Adams MS, Fishwick K, Bronner-Fraser M, Nieto MA. Epithelial-mesenchymal transitions: the importance of changing cell state in development and disease. *J Clin Invest* 2009; **119**: 1438–49.
- Cano A, Perez-Moreno MA, Rodrigo I, et al. The transcription factor snail controls epithelial-mesenchymal transitions by repressing E-cadherin expression. *Nat Cell Biol* 2000; **2**: 76–83.
- Nieto MA, Sargent MG, Wilkinson DG, Cooke J. Control of cell behavior during vertebrate development by Slug, a zinc finger gene. *Science* 1994; **264**: 835–9.
- Battle E, Sancho E, Franci C, et al. The transcription factor snail is a repressor of E-cadherin gene expression in epithelial tumour cells. *Nat Cell Biol* 2000; **2**: 84–9.
- Poser I, Dominguez D, De Herreros AG, et al. Loss of E-cadherin expression in melanoma cells involves up-regulation of the transcriptional repressor Snail. *J Biol Chem* 2001; **276**: 24661–6.
- Yokoyama K, Kamata N, Hayashi E, et al. Reverse correlation of E-cadherin and snail expression in oral squamous cell carcinoma cells *in vitro*. *Oral Oncol* 2001; **37**: 65–71.
- Jiao W, Miyazaki K, Kitajima Y. Inverse correlation between E-cadherin and Snail expression in hepatocellular carcinoma cell lines *in vitro* and *in vivo*. *Br J Cancer* 2002; **86**: 98–101.
- Hanahan D, Weinberg RA. Hallmarks of cancer: the next generation. *Cell* 2011; **144**: 646–74.
- Kalluri R, Weinberg RA. The basics of epithelial-mesenchymal transition. *J Clin Invest* 2009; **119**: 1420–8.
- Barrallo-Gimeno A, Nieto MA. The Snail genes as inducers of cell movement and survival: implications in development and cancer. *Development* (Cambridge, England) 2005; **132**: 3151–61.
- Zavadil J, Bottinger EP. TGF-beta and epithelial-to-mesenchymal transitions. *Oncogene* 2005; **24**: 5764–74.
- Xu J, Lamouille S, Derynck R. TGF-beta-induced epithelial to mesenchymal transition. *Cell Res* 2009; **19**: 156–72.
- Peinado H, Olmeda D, Cano A. Snail, Zeb and bHLH factors in tumour progression: an alliance against the epithelial phenotype? *Nat Rev Cancer* 2007; **7**: 415–28.
- Vincent T, Neve EP, Johnson JR, et al. A SNAIL1-SMAD3/4 transcriptional repressor complex promotes TGF-beta mediated epithelial-mesenchymal transition. *Nat Cell Biol* 2009; **11**: 943–50.
- Garibaldi F, Cicchini C, Conigliaro A, et al. An epistatic mini-circuitry between the transcription factors Snail and HNF4alpha controls liver stem cell and hepatocyte features exhorting opposite regulation on stemness-inhibiting microRNAs. *Cell Death Differ* 2012; **19**: 937–46.
- Bracken CP, Gregory PA, Kolesnikoff N, et al. A double-negative feedback loop between ZEB1-SIP1 and the microRNA-200 family regulates epithelial-mesenchymal transition. *Cancer Res* 2008; **68**: 7846–54.
- Gregory PA, Bert AG, Paterson EL, et al. The miR-200 family and miR-205 regulate epithelial to mesenchymal transition by targeting ZEB1 and SIP1. *Nat Cell Biol* 2008; **10**: 593–601.
- Lamouille S, Subramanyam D, Belloch R, Derynck R. Regulation of epithelial-mesenchymal and mesenchymal-epithelial transitions by microRNAs. *Curr Opin Cell Biol* 2013; **25**: 200–7.
- Xu ZY, Yu QM, Du YA, et al. Knockdown of long non-coding RNA hotair suppresses tumor invasion and reverses epithelial-mesenchymal transition in gastric cancer. *Int J Biol Sci* 2013; **9**: 587–97.
- Ying L, Chen Q, Wang Y, et al. Upregulated MALAT-1 contributes to bladder cancer cell migration by inducing epithelial-to-mesenchymal transition. *Mol Biosyst* 2012; **8**: 2289–94.
- Baum B, Settleman J, Quinlan MP. Transitions between epithelial and mesenchymal states in development and disease. *Semin Cell Dev Biol* 2008; **19**: 294–308.
- Esteban MA, Bao X, Zhuang Q, et al. The mesenchymal-to-epithelial transition in somatic cell reprogramming. *Curr Opin Genet Dev* 2012; **22**: 423–8.
- Samavarchi-Tehrani P, Golipour A, David L, et al. Functional genomics reveals a BMP-driven mesenchymal-to-epithelial transition in the initiation of somatic cell reprogramming. *Cell Stem Cell* 2010; **7**: 64–77.

36. Thiery JP, Acloque H, Huang RY, Nieto MA. Epithelial-mesenchymal transitions in development and disease. *Cell* 2009; **139**: 871–90.
37. Prindull G. Hypothesis: cell plasticity, linking embryonal stem cells to adult stem cell reservoirs and metastatic cancer cells? *Exp Hematol* 2005; **33**: 738–46.
38. Ricci-Vitiani L, Lombardi DG, Pilozzi E, *et al.* Identification and expansion of human colon-cancer-initiating cells. *Nature* 2007; **445**: 111–5.
39. Bapat SA. Evolution of cancer stem cells. *Semin Cancer Biol* 2007; **17**: 204–13.
40. Lu M, Jolly Mk, Levine H, Onuchic JN, Ben-Jacob E. MicroRNA-based regulation of epithelial-hybrid-mesenchymal fate determination. *Proc Natl Acad Sci USA* 2013; **110**: 18144–9.
41. Liu J, Eischeid AN, Chen XM. Col1A1 production and apoptotic resistance in TGF-beta1-induced epithelial-to-mesenchymal transition-like phenotype of 603B cells. *PLoS ONE* 2012; **7**: e51371.
42. Kaimori A, Potter J, Kaimori JY, *et al.* Transforming growth factor-beta1 induces an epithelial-to-mesenchymal transition state in mouse hepatocytes *in vitro*. *J Biol Chem* 2007; **282**: 22089–101.
43. Cicchini C, Filippini D, Coen S, *et al.* Snail controls differentiation of hepatocytes by repressing HNF4alpha expression. *J Cell Physiol* 2006; **209**: 230–8.
44. Franco DL, Mainez J, Vega S, *et al.* Snail1 suppresses TGF-beta-induced apoptosis and is sufficient to trigger EMT in hepatocytes. *J Cell Sci* 2010; **123** Part 20: 3467–77.
45. Valdes F, Alvarez AM, Locascio A, *et al.* The epithelial mesenchymal transition confers resistance to the apoptotic effects of transforming growth factor Beta in fetal rat hepatocytes. *Mol Cancer Res: MCR* 2002; **1**: 68–78.
46. Cicchini C, Laudadio I, Citarella F, *et al.* TGFbeta-induced EMT requires focal adhesion kinase (FAK) signaling. *Exp Cell Res* 2008; **314**: 143–52.
47. Godoy P, Hengstler JG, Ilkavets I, *et al.* Extracellular matrix modulates sensitivity of hepatocytes to fibroblastoid dedifferentiation and transforming growth factor beta-induced apoptosis. *Hepatology* 2009; **49**: 2031–43.
48. Chu AS, Diaz R, Hui JJ, *et al.* Lineage tracing demonstrates no evidence of cholangiocyte epithelial-to-mesenchymal transition in murine models of hepatic fibrosis. *Hepatology* 2011; **53**: 1685–95.
49. Omenetti A, Porrello A, Jung Y, *et al.* Hedgehog signaling regulates epithelial-mesenchymal transition during biliary fibrosis in rodents and humans. *J Clin Invest* 2008; **118**: 3331–42.
50. Kordes C, Sawitza I, Muller-Marbach A, *et al.* CD133 + hepatic stellate cells are progenitor cells. *Biochem Biophys Res Commun* 2007; **352**: 410–7.
51. Michelotti GA, Xie G, Swiderska M, *et al.* Smoothed is a master regulator of adult liver repair. *J Clin Invest* 2013; **123**: 2380–94.
52. Choi SS, Omenetti A, Witek RP, *et al.* Hedgehog pathway activation and epithelial-to-mesenchymal transitions during myofibroblastic transformation of rat hepatic cells in culture and cirrhosis. *Am J Physiol Gastrointest Liver Physiol* 2009; **297**: G1093–106.
53. Yang L, Jung Y, Omenetti A, *et al.* Fate-mapping evidence that hepatic stellate cells are epithelial progenitors in adult mouse livers. *Stem Cells* 2008; **26**: 2104–13.
54. Conigliaro A, Amicone L, Costa V, *et al.* Evidence for a common progenitor of epithelial and mesenchymal components of the liver. *Cell Death Differ* 2013; **20**: 1116–23.
55. Zeisberg M, Yang C, Martino M, *et al.* Fibroblasts derive from hepatocytes in liver fibrosis via epithelial to mesenchymal transition. *J Bio Chem* 2007; **282**: 23337–47.
56. Taura K, Miura K, Iwaisako K, *et al.* Hepatocytes do not undergo epithelial-mesenchymal transition in liver fibrosis in mice. *Hepatology* 2010; **51**: 1027–36.
57. Amicone L, Spagnoli FM, Spath G, *et al.* Transgenic expression in the liver of truncated Met blocks apoptosis and permits immortalization of hepatocytes. *EMBO J* 1997; **16**: 495–503.
58. Wang ND, Finegold MJ, Bradley A, *et al.* Impaired energy homeostasis in C/EBP alpha knockout mice. *Science* 1995; **269**: 1108–12.
59. Parviz F, Matullo C, Garrison WD, *et al.* Hepatocyte nuclear factor 4alpha controls the development of a hepatic epithelium and liver morphogenesis. *Nat Genet* 2003; **34**: 292–6.
60. Battle MA, Konopka G, Parviz F, *et al.* Hepatocyte nuclear factor 4alpha orchestrates expression of cell adhesion proteins during the epithelial transformation of the developing liver. *Proc Natl Acad Sci USA* 2006; **103**: 8419–24.
61. Hayhurst GP, Lee YH, Lambert G, Ward JM, Gonzalez FJ. Hepatocyte nuclear factor 4alpha (nuclear receptor 2A1) is essential for maintenance of hepatic gene expression and lipid homeostasis. *Mol Cell Biol* 2001; **21**: 1393–403.
62. Watt AJ, Garrison WD, Duncan SA. HNF4: a central regulator of hepatocyte differentiation and function. *Hepatology* 2003; **37**: 1249–53.
63. Walesky C, Gunewardena S, Terwilliger EF, *et al.* Hepatocyte-specific deletion of hepatocyte nuclear factor-4alpha in adult mice results in increased hepatocyte proliferation. *Am J Physiol Gastrointest Liver Physiol* 2013; **304**: G26–37.
64. Odom DT, Zizlsperger N, Gordon DB, *et al.* Control of pancreas and liver gene expression by HNF transcription factors. *Science* 2004; **303**: 1378–81.
65. Spagnoli FM, Cicchini C, Tripodi M, Weiss MC. Inhibition of MMH (Met murine hepatocyte) cell differentiation by TGF(beta) is abrogated by pre-treatment with the heritable differentiation effector FGF1. *J Cell Sci* 2000; **20** Part 20: 3639–47.
66. Miyoshi A, Kitajima Y, Kido S, *et al.* Snail accelerates cancer invasion by upregulating MMP expression and is associated with poor prognosis of hepatocellular carcinoma. *Br J Cancer* 2005; **92**: 252–8.
67. Osada T, Sakamoto M, Ino Y, *et al.* E-cadherin is involved in the intrahepatic metastasis of hepatocellular carcinoma. *Hepatology* 1996; **24**: 1460–7.
68. Lazarevich NL, Cheremnova OA, Varga EV, *et al.* Progression of HCC in mice is associated with a downregulation in the expression of hepatocyte nuclear factors. *Hepatology* 2004; **39**: 1038–47.
69. Spath GF, Weiss MC. Hepatocyte nuclear factor 4 provokes expression of epithelial marker genes, acting as a morphogen in dedifferentiated hepatoma cells. *J Cell Bio* 1998; **140**: 935–46.
70. Chiba H, Gotoh T, Kojima T, *et al.* Hepatocyte nuclear factor (HNF)-4alpha triggers formation of functional tight junctions and establishment of polarized epithelial morphology in F9 embryonal carcinoma cells. *Exp Cell Res* 2003; **286**: 288–97.

71. Sekiya S, Suzuki A. Direct conversion of mouse fibroblasts to hepatocyte-like cells by defined factors. *Nature* 2011; **475**: 390–3.
72. Santangelo L, Marchetti A, Cicchini C, *et al.* The stable repression of mesenchymal program is required for hepatocyte identity: a novel role for hepatocyte nuclear factor 4alpha. *Hepatology* 2011; **53**: 2063–74.
73. Choi SS, Diehl AM. Epithelial-to-mesenchymal transitions in the liver. *Hepatology* 2009; **50**: 2007–13.
74. Pelletier L, Rebouissou S, Vignjevic D, Bioulac-Sage P, Zucman-Rossi J. HNF1alpha inhibition triggers epithelial-mesenchymal transition in human liver cancer cell lines. *BMC cancer* 2011; **11**: 427.
75. Huang P, He Z, Ji S, *et al.* Induction of functional hepatocyte-like cells from mouse fibroblasts by defined factors. *Nature* 2011; **475**: 386–9.
76. Battula VL, Evans KW, Hollier BG, , *et al.* Epithelial-mesenchymal transition-derived cells exhibit multilineage differentiation potential similar to mesenchymal stem cells. *Stem Cells* 2010; **28**: 1435–45.
77. Morel AP, Lievre M, Thomas C, *et al.* Generation of breast cancer stem cells through epithelial-mesenchymal transition. *PLoS ONE* 2008; **3**: e2888.
78. Lazarevich NL, Shavochkina DA, Fleishman DI, *et al.* Deregulation of hepatocyte nuclear factor 4 (HNF4) as a marker of epithelial tumors progression. *Exp Oncol*; **32**: 167–71.
79. Cozzolino AM, Alonzi T, Santangelo L, *et al.* TGFbeta overrides HNF4alpha tumor suppressing activity through GSK3beta inactivation: implication for hepatocellular carcinoma gene therapy. *J Hepatol* 2013; **58**: 65–72.